

DESIGN INTENT

Landscape is an essential element of the proposed development at 68 Courtney Place Wattle Grove. Landscape areas have been designed to heighten both the aesthetic appeal and the ecological value of the development.

Metaleuca quinquenervia (Broadleaf paperbark) was selected following a discussion with the City of Kalamunda regarding their preferred tree species, with the specimens 10m mature height and 5m mature spread (source Ellenby Tree Farm), effectively softening the building mass, while shading and cooling the space. The streetscape amenity has been heightened further through the introduction of the iconic *Xanthorrhoea preissii* (Grass tree), both at the development entry and below the signage on the northern façade, with *Corymbia ficifolia* grafted 'Gin gin red' introduced to provide shade to the car parking bays.

A mixed plant palette of water-wise native groundcovers, strappy-leaved plants and small shrubs has been selected from the Apaca VIA's Wattle Grove Suburb Selector. Low growing profiles have been specified to ensure vehicular sightlines are maintained on adjacent roadways, with on-site water management being a key consideration.

LANDSCAPE LEGEND

TREES

—Mel qu
Metaleuca quinquenervia
x6 in 100L pots 10m high x 5m wide at maturity

—Cor fi
Corymbia ficifolia grafted 'Gin gin red'
x5 in 100L pots 6m high x 4m wide at maturity

—Xan pr
Xanthorrhoea preissii
x6 in 55L pots up to 5m high at maturity

—1.5m mulch strip for pedestrian egress.

GROUNDCOVERS

—Eremophila 'Blue horizon'
Grevillea obtusifolia 'Gin gin gem'
Hemiandra pungens
x168 tube stock total at 1m spacings.

STRAPPY-LEAFED PLANTS

—Anigozanthos 'Everlasting red'
Conostylis candicans
Dianella 'Revelation'
x144 tube stock total at 500mm spacings.

SMALL SHRUBS

—Banksia nivea
Hypocalymma robustum
Phytolacca buxifolia 'Cascade Of Stars'
x102 tube stock total at 1m spacings.

LANDSCAPING & PLANTING NOTES

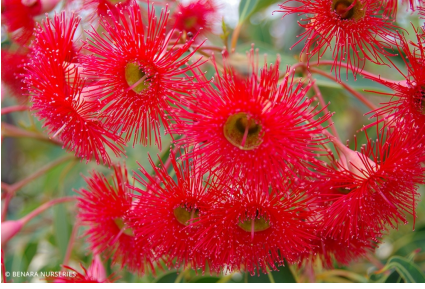
1. Planted areas are to be mulched with an organic course bark chip mulch to a minimum depth of 100mm.

Irrigation Notes:

1. All plantings are to be irrigated via a fully automatic system from mains supply.
2. Install a low flow trickle irrigation system.
3. Install a programmable water controller/timer system.
4. Direct rainwater runoff from buildings and hardstand areas to the landscaped areas.
5. Irrigation is to be programmed to set watering days according to Council guidelines.



Metaleuca quinquenervia



Corymbia ficifolia grafted 'Gin gin red'



Xanthorrhoea preissii



Eremophila 'Blue horizon'



Grevillea obtusifolia 'Gin gin gem'



Hemiandra pungens



Anigozanthos 'Everlasting red'



Conostylis candicans



Dianella 'Revelation'



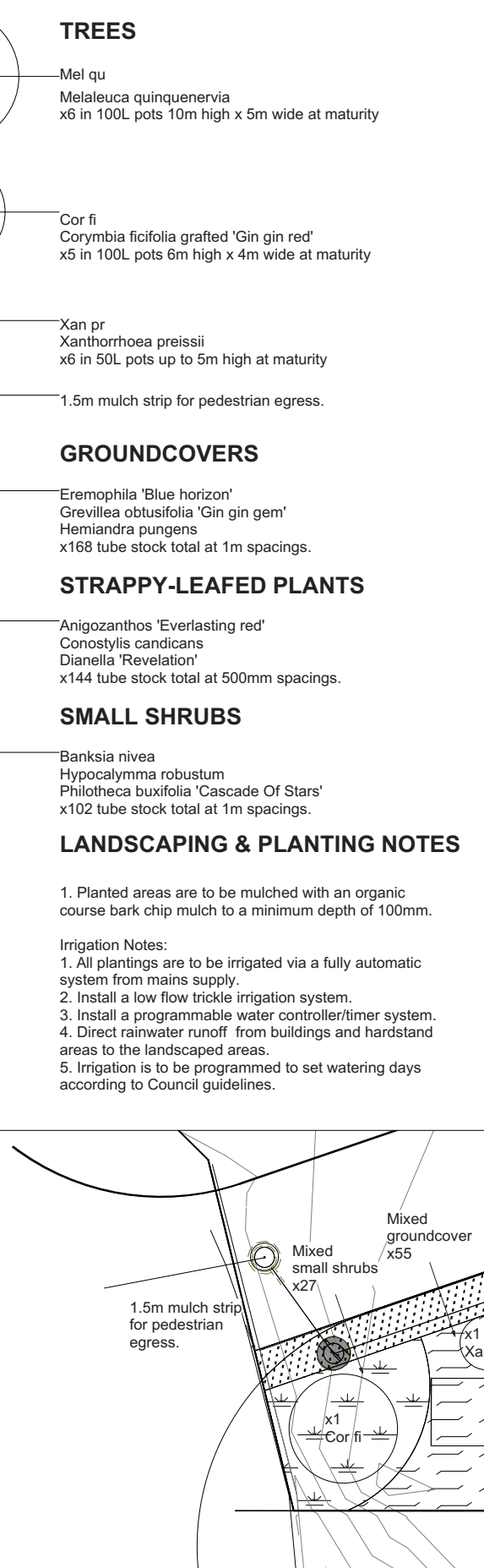
Banksia nivea



Hypocalymma robustum



Phytolacca buxifolia 'Cascade Of Stars'



1:100 NORTHERN ELEVATION INCLUDING FEATURE TREES & UNDERSTOREY PLANTINGS

NOTES:
*This is not a working drawing & further structural drawings may be required.
*All dimensions & levels to be checked on site prior to construction. If no survey has been undertaken, all measurements must be taken from building at all out. Some minor adjustments may be required depending on material sizes selected.
*All landscape works are to be in accordance with Council & State Regulations & in accordance with Australian Standards. The client in consultation with the leading Landscape, is responsible for obtaining plans for Council approval.
*All plants are selected by a qualified Landscape Architect, but may be subjected to extreme weather conditions, water deprivation, pests & diseases, therefore no warranty is offered for the success of a specified planting.
*Landscape specifies that all trees should be not banded, however this growth can be unpredictable & no warranty will be offered for any future damage to buildings, pools, footings, or paving by selected trees.

CONDITIONS:
*Landscape owns the copyright of this design. No part of the plan may be reproduced without permission & photographs used for promotional & commercial purposes, must credit Landscape as the designer of the landscape.