

Corporate & Community Services Committee Meeting

Agenda for Monday 17 March 2014



**shire of
kalamunda**

NOTICE OF MEETING CORPORATE & COMMUNITY SERVICES COMMITTEE

Dear Councillors

Notice is hereby given that the next meeting of the Corporate & Community Services Committee will be held in the Council Chambers, Administration Centre, 2 Railway Road, Kalamunda on **Monday 17 March 2014 at 6.30pm.**

Dinner will be served prior to the meeting, at 5.30pm.

Rhonda Hardy
Chief Executive Officer
12 March 2014

Our Vision and Our Values

Our Vision

The Shire will have a diversity of lifestyle and people. It will take pride in caring for the natural, social, cultural and built environments and provide opportunities for people of all ages.

Our Core Values

Service – We deliver excellent service by actively engaging and listening to each other.

Respect – We trust and respect each other by valuing our difference, communicating openly and showing integrity in all we do.

Diversity – We challenge ourselves by keeping our minds open and looking for all possibilities and opportunities.

Ethics – We provide honest, open, equitable and responsive leadership by demonstrating high standards of ethical behavior.

Our Aspirational Values

Prosperity – We will ensure our Shire has a robust economy through a mixture of industrial and commercial development.

Harmony – We will retain our natural assets in balance with our built environment.

Courage – We take risks that are calculated to lead us to a bold new future.

Creativity – We create and innovate to improve all we do.

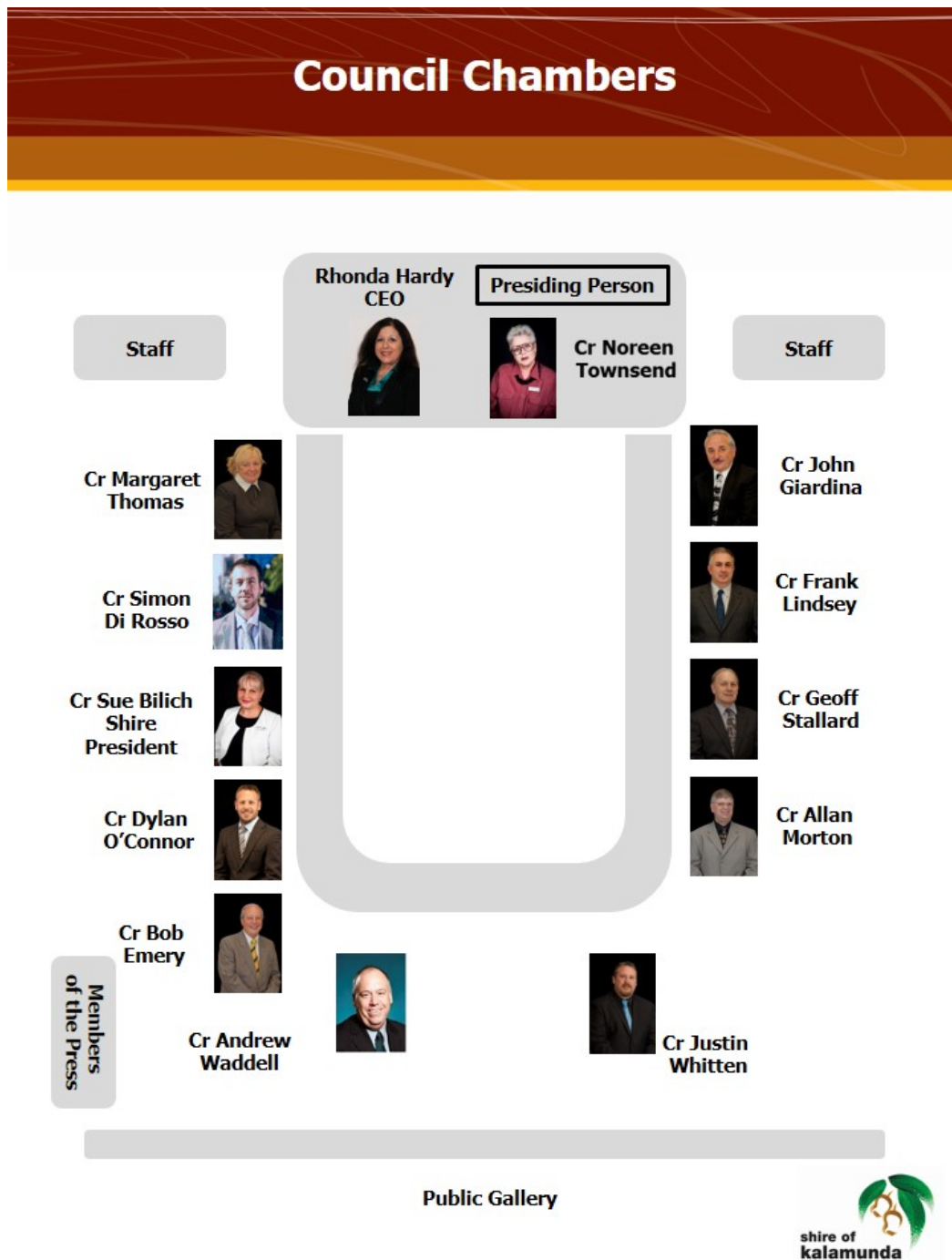


INFORMATION FOR THE PUBLIC ATTENDING COMMITTEE OR COUNCIL MEETINGS

Welcome to this evening's meeting. The following information is provided on the meeting and matters which may affect members of the public.

If you have any queries related to procedural matters, please contact a member of staff.

Council Chambers – Seating Layout



Standing Committee Meetings – Procedures

1. Standing Committees are open to the public, except for Confidential Items listed on the Agenda.
2. Shire of Kalamunda Standing Committees have a membership of all 12 Councillors.
3. Unless otherwise advised a Standing Committee makes recommendations only to the next scheduled Ordinary Council Meeting.
4. Members of the public who are unfamiliar with meeting proceedings are invited to seek advice prior to the meeting from a Shire Staff Member.
5. Members of the public are able to ask questions at a Standing Committee Meeting during Public Question Time. The questions should be related to the purposes of the Standing Committee.
6. Members of the public wishing to make a comment on any Agenda item may request to do so by advising staff prior to commencement of the Standing Committee Meeting.
7. Comment from members of the public on any item of the Agenda is usually limited to three minutes and should address the Recommendations at the conclusion of the report.
8. To facilitate the smooth running of the meeting, silence is to be observed in the public gallery at all times except for Public Question Time.
9. All other arrangements are in general accordance with Council's Standing Orders, the Policies and decision of person chairing the Committee Meeting.

Emergency Procedures

Please view the position of the Exits, Fire Extinguishers and Outdoor Assembly Area as displayed on the wall of Council Chambers.

In case of an emergency follow the instructions given by Council Personnel.

We ask that you do not move your vehicle as this could potentially block access for emergency services vehicles.

Please remain at the assembly point until advised it is safe to leave.

INDEX

1.0	OFFICIAL OPENING.....	6
2.0	ATTENDANCE, APOLOGIES AND LEAVE OF ABSENCE PREVIOUSLY APPROVED	6
3.0	PUBLIC QUESTION TIME.....	6
4.0	PETITIONS/DEPUTATIONS	6
5.0	CONFIRMATION OF MINUTES OF PREVIOUS MEETING.....	6
6.0	ANNOUNCEMENTS BY THE PRESIDING MEMBER WITHOUT DISCUSSION	6
7.0	MATTERS FOR WHICH MEETING MAY BE CLOSED	6
8.0	DISCLOSURE OF INTERESTS	6
9.0	REPORTS TO COUNCIL	7
	09. DEBTORS AND CREDITORS REPORT FOR THE PERIOD ENDED 28 FEBRUARY 2014	8
	10. RATES DEBTORS REPORT FOR THE PERIOD ENDED 28 FEBRUARY 2014.....	56
	11. HOUSEHOLD WASTE COLLECTION SERVICE AND APPLICATION FOR FUNDING UNDER THE BETTER BINS PROGRAM.....	60
	12. CHANGE IN VALUATION METHOD.....	81
10.0	MOTIONS OF WHICH PREVIOUS NOTICE HAS BEEN GIVEN	86
11.0	QUESTIONS BY MEMBERS WITHOUT NOTICE	86
12.0	QUESTIONS BY MEMBERS OF WHICH DUE NOTICE HAS BEEN GIVEN	86
13.0	URGENT BUSINESS APPROVED BY THE PRESIDING MEMBER OR BY DECISION.....	87
14.0	MEETING CLOSED TO THE PUBLIC	87
15.0	CLOSURE	87

AGENDA

1.0 OFFICIAL OPENING

2.0 ATTENDANCE, APOLOGIES AND LEAVE OF ABSENCE PREVIOUSLY APPROVED

3.0 PUBLIC QUESTION TIME

A period of not less than 15 minutes is provided to allow questions from the gallery on matters relating to the functions of this Committee. For the purposes of Minuting, these questions and answers will be summarised.

4.0 PETITIONS/DEPUTATIONS

5.0 CONFIRMATION OF MINUTES OF PREVIOUS MEETING

5.1 That the Minutes of the Corporate & Community Services Committee Meeting held on 17 February 2014 are confirmed as a true and accurate record of the proceedings.

Moved:

Seconded:

Vote:

Statement by Presiding Member

"On the basis of the above Motion, I now sign the minutes as a true and accurate record of the meeting of 17 February 2014".

6.0 ANNOUNCEMENTS BY THE PRESIDING MEMBER WITHOUT DISCUSSION

7.0 MATTERS FOR WHICH MEETING MAY BE CLOSED

7.1

8.0 DISCLOSURE OF INTERESTS

8.1 Disclosure of Financial and Proximity Interests

- a. Members must disclose the nature of their interest in matters to be discussed at the meeting. (Sections 5.60B and 5.65 of the *Local Government Act 1995*.)
- b. Employees must disclose the nature of their interest in reports or advice when giving the report or advice to the meeting. (Sections 5.70 and 5.71 of the *Local Government Act 1995*.)

8.2 Disclosure of Interest Affecting Impartiality

- a. Members and staff must disclose their interest in matters to be discussed at the meeting in respect of which the member or employee had given or will give advice.

9.0 REPORTS TO COUNCIL

Please Note: declaration of financial/conflict of interests to be recorded prior to dealing with each item.

Declaration of financial / conflict of interests to be recorded prior to dealing with each item.

09. Debtors and Creditors Report for the Period Ended 28 February 2014

Previous Items	N/A
Responsible Officer	Director Corporate Services
Service Area	Finance
File Reference	FI-CRS-002
Applicant	N/A
Owner	N/A
Attachment 1	Creditors Payment Listing for the month of February 2014
Attachment 2	Summary of Debtors for the month of February 2014
Attachment 3	Summary of Creditors for the month of February 2014

PURPOSE

1. To receive the monthly report on creditors payment listings for the month of February 2014 (Attachments 1).
2. To receive the monthly report on debtors and creditors (Attachments 2 and 3).

BACKGROUND

3. Council has requested reports detailing outstanding debtors and creditors on a monthly basis.

DETAILS

4. Invoices over 30 days total \$17,440.95, debts of significance are:
 - Department of Fire & Emergency Services \$2,461.01 – Expenses Community Fire Officer;
 - Early Bird Learning \$2,050.85 – Hall Hire;
 - Shire of Corrigin \$2,034.54 – Building Services; and
 - Zig Zag Café \$1,835.63 – Lease / Operational Expenses.
5. Invoices over 60 days total \$5,669.17, debts of significance are:
 - Western Power \$2,791.07 – Private Works; and
 - Zig Zag Café \$2,453.48 – Lease / Operational Expenses.
6. Invoices over 90 days total \$39,262.73, debts of significance are:
 - Foothills Netball Association \$4,559.57 – Loan / Operational Expenses;
 - Forrestfield United Soccer Club \$5,923.97 – Loan;
 - Lesmurdie Tennis Club \$24,000 – Contribution to Extension; and
 - Western Power \$3,859.68 – Private Works.

Creditors

7. Payments totalling \$4,390,154.61 were made during the month of February 2014. Standard payment terms are 30 days from the end of the month, with local businesses and contractors on 14 day terms.

8. Significant Municipal payments made in the month were:

Supplier	Purpose	\$
Australian Tax Office	PAYG payments	441,722.47
Allleasing Pty Ltd	Leasing hire charge on IT Infrastructure	80,688.91
Beaver Tree Services	Tree maintenance and pruning – various locations	64,248.25
Chris Brook Builder	Public Toilet – History Village	54,182.44
Datacom Systems Pty Ltd	Infrastructure roll out – project work	90,196.15
Dell Australia	Infrastructure roll out – desktops	227,451.90
DMC Cleaning	Cleaning various buildings – 2 months	97,938.37
Eastern Metropolitan Regional Council	Domestic/Waste Charges and disposal fees	376,795.84
Perth Waste Pty Ltd	Weekly collection and disposal of waste services	248,107.80
Fulton Hogan Industries Pty Ltd	Road infrastructure & maintenance – various locations	241,325.94
Redline (WA) Pty Ltd	Construction of sewer main – Abernethy Rd	144,192.13
Macquarie Equipment Finance Pty Ltd	Equipment lease hire – final payment	58,792.01
Synergy	Power charges	193,079.20
WA Local Government Superannuation Plan	Superannuation contributions	257,616.93
West Australian Electoral Commission	LG Ordinary Election costs	105,607.24

9. These payments total \$2,681,945.58 and represent 61% of all payments for the month.

Trust Account Payments

10. The Trust Accounts maintained by the Shire relate to the following types:

- CELL 9 Trust
- POS Trust
- BCITF Levy
- Building Licence Levy
- Unclaimed Monies

11. The following payments were made from the Trust Accounts in the month of February 2014.

Cell 9 Trust		Amount (\$)
Date	Description	
11/2/2014	Assetic – Database maintenance for the period 1/7/2013 to 31/1/2014	9,075.00
POS Trust		Amount (\$)
Date	Description	
	No payments	-
BCITF Levy		Amount (\$)
Date	Description	
4/2/2014	Building and Construct Industry – January 2014	23,144.16
Building Licence Levy		Amount (\$)
Date	Description	
28/2/2014	Building Commission – February 2014 levies	16,875.30
Forrestfield Industrial Area Trust		Amount (\$)
Date	Description	
	No payments	-

STATUTORY AND LEGAL CONSIDERATIONS

12. In accordance with the requirements of the *Local Government (Financial Management) Regulations 1996 (Regulation 13)* a list of accounts paid by the Chief Executive Officer is to be prepared each month and presented in the manner required as per the Regulation.

POLICY CONSIDERATIONS

13. Nil.

COMMUNITY ENGAGEMENT REQUIREMENTS

14. Nil.

FINANCIAL CONSIDERATIONS

15. Nil.

STRATEGIC COMMUNITY PLAN

Strategic Planning Alignment

16. *Kalamunda Advancing: Strategic Community Plan to 2023*

OBJECTIVE 6.8 - To ensure financial sustainability through the implementation of effective financial management, systems and plans.

Strategy 6.8.4 Provide effective financial services to support the Shire's operations and to meet sustainability planning, reporting and accountability requirements.

SUSTAINABILITY

Social Implications

17. Nil.

Economic Implications

18. Nil.

Environmental Implications

19. Nil.

RISK MANAGEMENT CONSIDERATIONS

Debtors

20.

Risk	Likelihood	Consequence	Rating	Action/Strategy
The Shire is exposed to the potential risk of the debtor failing to make payments which it is obligated to do. This will result in the disruption of cash flows and increased collection costs. The loss may be complete or partial and can arise in a number of circumstances.	Possible	Minor	Low	Ensure debt collections is rigorously managed.

Creditors

21.

Risk	Likelihood	Consequence	Rating	Action/Strategy
If the Shire defaults on payment to a creditor, the Shire runs the risk of an adverse credit record resulting in potential future disruptions on cash flows and ability to obtain credit.	Unlikely	Major	Low	Ensure all disputes are resolved in a timely manner.

OFFICER COMMENT

22. Nil.

Voting Requirements: Simple Majority

OFFICER RECOMMENDATION (C&C 09/2014)

That Council:

1. Receives the list of payments made from the Municipal Accounts in February 2014 (Attachment 1) in accordance with the requirements of the *Local Government (Financial Management) Regulations 1996 (Regulation 12)*.
2. Receives the outstanding debtors (Attachment 2) and creditors (Attachment 3) reports for the month of February 2014.
3. Receives the list of payments made from the Trust Accounts in February 2014 as noted in point 11 above in accordance with the requirements of the *Local Government (Financial Management) Regulations 1996 (Regulation 12)*.

Moved:

Seconded:

Vote:

Attachment 1

Creditors Payment Listing 29 January to 27 February 2014

Chq/EFT	Date	Name	Description	Amount
691	29/01/2014	AUSTRALIAN TAXATION OFFICE	TAXATION	146073.28
692	10/02/2014	COMMONWEALTH BANK - BUSINESS CARD	BUSINESS CORPORATE CARD - VARIOUS PURCHASES HACC ACTIVITY OFFICER - \$889.60 LIBRARY SERVICES TEAM LEADER - \$802.82 FUNCTIONS CO-ORDINATOR - \$981.59 CO-ORDINATOR PROCUREMENT - \$6808.99 HACC ACTIVITY OFFICER - \$415.25 HACC ACTIVITY OFFICER - \$403.55 MANAGER HR - \$3373.99	13675.79
693	10/02/2014	LES MILLS AUSTRALIA	MONTHLY LICENCE FEE	1000.54
694	11/02/2014	IINET TECHNOLOGIES PTY LTD	INTERNET ACCESS	829.00
695	12/02/2014	AUSTRALIAN TAXATION OFFICE	TAXATION	148408.69
696	14/02/2014	WESTERN AUSTRALIAN TREASURY CORPORATION	LOAN # 219 FIXED COMPONENT	17109.86
697	26/02/2014	AUSTRALIAN TAXATION OFFICE	TAXATION	147240.50
EFT33784	30/01/2014	SHAWMAC PTY LTD	PROGRESS PAYMENT 2 - DESIGN PLANS FOR ABERNETHY ROAD DUPLICATION	3630.00
EFT33785	30/01/2014	ANSTAD PTY LTD	REGISTARTION FOR STAFF TO ATTEND DRAINS WORKSHOP	1732.50
EFT33786	30/01/2014	NEVERFAIL SPRINGWATER LTD (KALA LIB)	BOTTLED WATER SUPPLIES / MAINTENANCE	59.10
EFT33787	30/01/2014	COUNTRYWIDE PUBLICATIONS	1/2 PAGE MONTHLY ADVERT FOR ZZCC FOR YOUR GUIDE TO PERTH AND FREMANTLE	540.00
EFT33788	30/01/2014	COMMUNITYWEST (INC)	REGISTRATION FOR STAFF TO ATTEND THE CDC WORKSHOP	204.60
EFT33789	30/01/2014	NEVERFAIL SPRINGWATERLTD (FORRESTFIELD LIB)	BOTTLED WATER SUPPLIES / MAINTENANCE	31.60
EFT33790	30/01/2014	PICTON PRESS	PRINTING OF BROCHURES FOR VARIOUS EVENTS	9763.89
EFT33791	30/01/2014	ASSETIC AUSTRALIA PTY LTD	TRAINING, MENTORING, DEVELOPING ASSET CLASS CLASSIFICATION STRUCTURES IN MYDATA	17283.94

Chq/EFT	Date	Name	Description	Amount
EFT33792	30/01/2014	VIP CARPET AND UPHOLSTERY CLEANING SERVICE	CARPET CLEANING AT VARIOUS LOCATIONS	516.00
EFT33793	30/01/2014	JUDITH M EDWARDS	CROSSOVER CONTRIBUTION	385.00
EFT33794	30/01/2014	BRUCE GEORGE GREEN	FOOTPATH DEPOSIT REFUND	700.00
EFT33795	30/01/2014	SHEILA DUNNE	RETURN OF MAINTENANCE BOND	4000.00
EFT33796	30/01/2014	NOEL AND ROSSALIN BAKER	PART DOG REGISTRATION REFUND	20.00
EFT33797	30/01/2014	WA LOCAL GOVERNMENT SUPERANNUATION PLAN	SUPERANNUATION CONTRIBUTIONS	84632.56
EFT33798	30/01/2014	SHIRE OF KALAMUNDA STAFF SOCIAL CLUB	PAYROLL DEDUCTIONS	264.00
EFT33799	30/01/2014	CHILD SUPPORT AGENCY	PAYROLL DEDUCTIONS	845.04
EFT33800	30/01/2014	COVS PARTS PTY LTD	PLANT / VEHICLE PARTS	1709.58
EFT33801	30/01/2014	GULLY VIEWS NEWSAGENCY	SUBSCRIPTIONS & NEWSPAPERS FOR VARIOUS LOCATIONS	470.64
EFT33802	30/01/2014	KALAMUNDA TOYOTA	PLANT / VEHICLE PARTS	1041.97
EFT33803	30/01/2014	MCLEODS BARRISTERS & SOLICITORS	LEGAL EXPENSES	5465.57
EFT33804	30/01/2014	WALKERS HARDWARE (MITRE 10)	HARDWARE SUPPLIES	109.54
EFT33805	30/01/2014	MCKAY EARTHMOVING PTY LTD	PLANT EQUIPMENT AND OPERATOR HIRE FOR VARIOUS LOCATIONS	10395.99
EFT33806	30/01/2014	EASTERN METROPOLITAN REGIONAL COUNCIL	DOMESTIC / WASTE CHARGES - RED HILL TIP	73799.26
EFT33807	30/01/2014	DOMUS NURSERY	GARDEN SUPPLIES FOR VARIOUS LOCATIONS	1308.01
EFT33808	30/01/2014	THE WATERSHED WATER SYSTEMS	RETICULATION PARTS FOR VARIOUS RESERVES	5448.24
EFT33809	30/01/2014	SANDGROPER SEPTICS	SEPTIC / GREASE TANK CLEAN OUT SERVICES AT VARIOUS LOCATIONS	368.59
EFT33810	30/01/2014	BRADOCK PODIATRY SERVICES PTY LTD	PODIATRY SERVICES AT JACK HEALEY CENTRE	1038.80
EFT33811	30/01/2014	DAYNITE TOWING SERVICE (WA) PTY LTD (FORMERLEY MOBITOW PTY LTD)	TOWING SERVICES	275.00
EFT33812	30/01/2014	GRIMES CONTRACTING PTY LTD	CONTRACTOR BUILDING MAINTENANCE FOR VARIOUS BUILDINGS	264.00
EFT33813	30/01/2014	KALAMUNDA STATE EMERGENCY SERVICE	REIMBURSEMENT - GOODS AND SERVICES	3197.61

Chq/EFT	Date	Name	Description	Amount
EFT33814	30/01/2014	BRICK CONCEPTS	CROSSOVER MAINTENANCE / REPAIRS FOR VARIOUS LOCATIONS	748.00
EFT33815	30/01/2014	FULTON HOGAN INDUSTRIES PTY LTD	ROAD MATERIALS FOR VARIOUS LOCATIONS	16713.90
EFT33816	30/01/2014	FOODWORKS FRESH FORRESTFIELD	GROCERY SUPPLIES	749.44
EFT33817	30/01/2014	LO-GO APPOINTMENTS	HIRE OF TEMPORARY STAFF FOR DEPOT / ADMIN	2319.51
EFT33818	30/01/2014	STAFFLINK INDUSTRIAL	HIRE OF TEMPORARY STAFF FOR DEPOT / ADMIN	3949.87
EFT33819	30/01/2014	BASKETBALL RINGLEADER	SUPPLY AND INSTALL BACKBOARDS AND RINGS FOR THE UPGRADE OF EXISTING BASKETBALL COURT AT BILL SHAW RESERVE	3025.00
EFT33820	30/01/2014	FLEXI STAFF PTY.LTD.	HIRE OF TEMPORARY STAFF FOR DEPOT / ADMIN	4004.80
EFT33821	30/01/2014	CRABBS KALAMUNDA (IGA)	GROCERY SUPPLIES	139.84
EFT33822	30/01/2014	ANDANTINO PTY LTD T/AS OUTDOOR WORLD	PLANNING APPLICATION FEE REFUND	147.00
EFT33823	30/01/2014	VENTURA HOMES PTY LTD	FOOTPATH DEPOSIT REFUND	681.92
EFT33824	30/01/2014	DALE ALCOCK HOMES PTY LTD	FOOTPATH DEPOSIT REFUND	1200.00
EFT33825	30/01/2014	HIGHLINE LTD	PLANNING APPLICATION FEE REFUND	147.00
EFT33826	30/01/2014	MAIDA VALE TENNIS CLUB	KIDSPORT FUNDING FOR VARIOUS PLAYERS	540.00
EFT33827	30/01/2014	ASHMY PTY LTD	FOOTPATH DEPOSIT REFUND	1200.00
EFT33828	30/01/2014	GCS SERVICES	PLUMBING SERVICES TO VARIOUS SHIRE BUILDINGS	387.75
EFT33829	30/01/2014	HAWLEY'S BOBCAT SERVICE	PLANT EQUIPMENT AND OPERATOR HIRE FOR VARIOUS LOCATIONS	5678.20
EFT33830	30/01/2014	BENTLEY SYSTEMS PTY LTD	MICROSTATION SELECT SUBSCRIPTION	1245.00
EFT33831	30/01/2014	FORRESTFIELD NEWSPAPERS & MAGAZINES DELIVERY	NEWSPAPERS / MAGAZINES DELIVERIES FOR VARIOUS LOCATIONS	70.53
EFT33832	30/01/2014	GHD PTY LTD	GEOTECHNICAL INVESTIGATION AND REPORTING - HALE ROAD / ARTHUR ROAD ROUNDABOUT & WIMBRIDGE ROAD EXIT	8360.00
EFT33833	30/01/2014	IMPRESSIONS THE HOME BUILDER	FOOTPATH DEPOSIT REFUND	1000.00

Chq/EFT	Date	Name	Description	Amount
EFT33834	30/01/2014	ANSTAT PTY LTD	ANNUAL SUBSCRIPTION TO FOOD STANDARDS CODE	270.00
EFT33835	30/01/2014	INSTITUTE OF PUBLIC WORKS ENGINEERING AUSTRALIA WA	REGISTRATION FOR STAFF TO ATTEND IPWEA STATE CONFERENCE	1600.00
EFT33836	30/01/2014	FREEDOM POOLS	FOOTPATH DEPOSIT REFUND	1000.00
EFT33837	30/01/2014	TRILOGY SERVICING PTY LTD	AIRCONDITIONING MAINTENANCE / REPAIRS FOR VARIOUS LOCATIONS	1402.50
EFT33838	30/01/2014	COMMUNITY NEWSPAPER GROUP LTD	ADVERTISING FOR VARIOUS JOBS AND EVENTS	3211.52
EFT33839	30/01/2014	LAURA DI TORO	HALL BOND REFUND	300.00
EFT33840	30/01/2014	BIG W (AR W1.C3.U.07)	LIBRARY SUPPLIES	290.92
EFT33841	30/01/2014	PETER CLARK - PIANO TUNER	MAINTENANCE / REPAIRS TO PIANOS AT VARIOUS LOCATIONS	990.00
EFT33842	30/01/2014	MAIN ROADS (WA)	LINEMARKING AS A PART OF BLACKSPOT PROJECT AT MIDLAND / KALAMUNDA ROADS	5820.77
EFT33843	30/01/2014	LYNETTE TERESA SHERIDAN	FOOTPATH DEPOSIT REFUND	1000.00
EFT33844	30/01/2014	BRIAN BLECHYNDEN	RACQUET RE-STRINGING	13.50
EFT33845	30/01/2014	BGC RESIDENTIAL PTY LTD	FOOTPATH DEPOSIT REFUNDS	1854.50
EFT33846	30/01/2014	OPUS INTERNATIONAL CONSULTANTS (PCA) LIMITED	PROGRESS PAYMENT - PROFESSIONAL SERVICES - RELOCATION OF SEWER - ABERNETHY ROAD	8062.53
EFT33847	30/01/2014	SERENA DALGLEISH	BOND REFUND	50.00
EFT33848	30/01/2014	PICKERING BROOK HERITAGE GROUP	REIMBURSEMENT OF PUBLIC LIABILITY INSURANCE	1521.87
EFT33849	30/01/2014	CONFECT - EXPRESS	KIOSK SUPPLIES FOR HARTFIELD RECREATION CENTRE	473.22
EFT33850	30/01/2014	JASON FISHWICK	BUILDING APPLICATION FEE REFUND	40.50
EFT33851	30/01/2014	HILLS GOURMET	CATERING SUPPLIES	317.46
EFT33852	30/01/2014	GEMMILL HOMES	PLANNING APPLICATION FEE REFUND	1439.62
EFT33853	30/01/2014	GEORGE & SHARON DUFFY	CROSSOVER CONTRIBUTION	385.00

Chq/EFT	Date	Name	Description	Amount
EFT33854	30/01/2014	MARK A & JODY L BIDDLECOMBE	FOOTPATH DEPOSIT REFUND	1000.00
EFT33855	30/01/2014	LEANNE MARIE WALKER	CROSSOVER CONTRIBUTION	385.00
EFT33856	30/01/2014	KERB - FIX	KERB REPAIRS / MAINTENANCE FOR VARIOUS LOCATIONS	897.60
EFT33857	30/01/2014	MAIDA VALE DELIVERY ROUND	PAPER AND MAGAZINES DELIVERIES FOR HIGH WYCOMBE LIBRARY	39.45
EFT33858	30/01/2014	G.D.CHARLTON	PODIATRY SERVICES AT JACK HEALEY CENTRE	1596.42
EFT33859	30/01/2014	SECURE TRAFFIC	TRAFFIC MANAGEMENT FOR VARIOUS LOCATIONS	28459.75
EFT33860	30/01/2014	JACKSON MCDONALD LAWYERS	LEGAL EXPENSES	27536.21
EFT33861	30/01/2014	AGED & COMMUNITY SERVICES WA INC	REGISTRATION FOR STAFF TO ATTEND COMMUNITY CARE FORUM	25.00
EFT33862	30/01/2014	AUSTRALIAN SUPERANNUATION	SUPERANNUATION CONTRIBUTIONS	1366.87
EFT33863	30/01/2014	ROSEMARY FOX DANCE ACADEMY	HALL AND KEY BOND REFUND	350.00
EFT33864		EFT PAYMENT CANCELLED		
EFT33865	30/01/2014	PETER TUCATS SUPERANNUATION FUND	SUPERANNUATION CONTRIBUTIONS	250.70
EFT33866	30/01/2014	BINDALE SUPERANNUATION FUND	SUPERANNUATION CONTRIBUTIONS	76.52
EFT33867	30/01/2014	NEVERFAIL SPRINGWATER LTD (PETER ANDERTON CEN)	BOTTLED WATER SUPPLIES / MAINTENANCE	57.80
EFT33868	30/01/2014	FRANK LARRY AH-KUOI & SAILI TOMULI	PLANNING APPLICATION FEE REFUND	147.00
EFT33869	30/01/2014	STEPHEN PATRICK FORAN	PLANNING APPLICATION FEE REFUND	147.00
EFT33870	30/01/2014	PH CONCRETE (WA) PTY LTD	FOOTPATH MAINTENANCE / REPAIRS FOR VARIOUS LOCATIONS	8219.08
EFT33871	30/01/2014	JORGE'S CONTRACTING SERVICES	CLEANING SERVICES AT PETER ANDERTON CENTRE	2412.85
EFT33872	30/01/2014	NEBEUS PTY LTD	FOOTPATH DEPOSIT REFUND	700.00
EFT33873	30/01/2014	FONZ'S BOBCAT & TRUCK HIRE	PLANT EQUIPMENT AND OPERATOR HIRE FOR VARIOUS LOCATIONS	5974.95

Chq/EFT	Date	Name	Description	Amount
EFT33874	30/01/2014	BEAVER TREE SERVICES	TREE REMOVAL / PRUNING FOR VARIOUS LOCATIONS	13292.40
EFT33875	30/01/2014	VISION SUPER PTY LTD	SUPERANNUATION CONTRIBUTIONS	758.66
EFT33876	30/01/2014	ANGELA CANCI	PODIATRY SERVICES AT JACK HEALEY SERVICES	432.84
EFT33877	30/01/2014	UNIQUE WASTE MANAGEMENT SERVICES	HIRE OF TRUCK/OPERATOR WALLISTON TRANSFER STATION	7738.50
EFT33878	30/01/2014	101 RESIDENTIAL PTY LTD	FOOTPATH DEPOSIT REFUND	1000.00
EFT33879	30/01/2014	RACHAEL EHLERS	PART DOG REGISTRATION REFUND	14.15
EFT33880	30/01/2014	EYEZON PTY LTD (WHAT'S ON)	1/2 PAGE MONTHLY ADVERT FOR PERTH HILLS SPREAD	744.00
EFT33881	30/01/2014	SPECIALIST NEWS PTY LTD	RENEWAL OF OHS ALERT - SUBSCRIPTION. OHS NEWS, WORKPLACE SAFETY AND WORKERS COMP.	789.00
EFT33882	30/01/2014	HANDS-ON INFECTION CONTROL	HEPATITIS B VACCINATIONS FOR VARIOUS STAFF	230.10
EFT33883	30/01/2014	KALAJOS SCHOOL OF GYMNASTICS	KIDSPORT FUNDING FOR VARIOUS PLAYERS	400.00
EFT33884	30/01/2014	MPJ (WA) PTY LTD	SUPERANNUATION CONTRIBUTIONS	442.52
EFT33885	30/01/2014	HOIST HYDRAULICS WA	PLANT / VEHICLE PARTS	440.00
EFT33886	30/01/2014	LOUISA ILES	GROUP FITNESS INSTRUCTOR	45.43
EFT33887	30/01/2014	PRIME LAW PTY LTD	RATES REFUND	27.00
EFT33888	30/01/2014	FIREPLAN WA	BUSHFIRE MANAGEMENT STRATEGY FOR SHIRE OF KALAMUNDA	1320.00
EFT33889	30/01/2014	DMC CLEANING	CLEANING OF VARIOUS SHIRE BUILDINGS	46932.32
EFT33890	30/01/2014	BODYSCENTS	MERCHANDISE ITEMS ZIG ZAG CULTURAL CENTRE GIFT SHOP	319.44
EFT33891	30/01/2014	CUROST MILK SUPPLY	MILK SUPPLY ADMINISTRATION BUILDING AND DEPOT	234.60
EFT33892	30/01/2014	KJERSTIN BJELLAND	MONTHLY RENTAL	3160.00
EFT33893	30/01/2014	HIGH WYCOMBE LITTLE ATHLETICS	KIDSPORT FUNDING FOR VARIOUS PLAYERS	260.00

Chq/EFT	Date	Name	Description	Amount
EFT33894	30/01/2014	STEPHEN COLIN LEEKS	FOOTPATH DEPOSIT REFUND	1000.00
EFT33895	30/01/2014	MPK TREE SERVICES	TREE REMOVAL / BRANCH PRUNING AT VARIOUS LOCATIONS	3335.75
EFT33896	30/01/2014	JAYSON SARMIENTO	CROSSOVER CONTRIBUTION	385.00
EFT33897	30/01/2014	GLORIA ANNE WOODBURY	PART DOG REGISTRATION REFUND	20.00
EFT33898	30/01/2014	IRRIGATION WA PTY LTD	IRRIGATION MAINTENANCE FOR TYLER SPRINGS ESTATE	396.00
EFT33899	30/01/2014	MERIT CONSULTING GROUP	FOOTPATH DEPOSIT REFUNDS	2200.00
EFT33900	30/01/2014	STAN THE TYRE MAN (STAN'S TYRE SERVICE WA)	PLANT / VEHICLE PARTS	1787.50
EFT33901	30/01/2014	DATACOM SYSTEMS (WA) PTY LTD	PROFESSIONAL SERVICES FOR INFRASTRUCTURE BUILDING AND DEVELOPMENT	7837.50
EFT33902	30/01/2014	WOBBLYJULES INVESTMENTS FUND	SUPERANNUATION CONTRIBUTIONS	203.69
EFT33903	30/01/2014	ALEXIA ARMARO	CROSSOVER CONTRIBUTION	385.00
EFT33904	30/01/2014	MARY DEIRDRE WALSH	PART DOG REGISTRATION REFUND	57.00
EFT33905	30/01/2014	WORM AFFAIR	SUPPLY TUMBLWEED WORM CAFES AND STARTER PACKS	440.00
EFT33906	30/01/2014	AUSTRALIAN CATHOLIC SUPERANNUATION & RETIREMENT FUND (ACSRF)	SUPERANNUATION CONTRIBUTIONS	234.60
EFT33907	30/01/2014	TAGELLA CONSTRUCTION PTY LTD	FOOTPATH DEPOSIT REFUND	1000.00
EFT33908	30/01/2014	BLACK BOX CONTROL PTY LTD	MONTHLY FEE FOR THE 4 X GPS TRACKING UNITS INSTALLED ON OPERATION PLANTS	660.00
EFT33909	30/01/2014	WET2DRY PLUMBING	GENERAL PLUMBING SERVICES TO VARIOUS LOCATIONS	1194.16
EFT33910	30/01/2014	KALAMUNDA PATISSERIE	CATERING	36.50
EFT33911	30/01/2014	THE SULLIVAN SUPER FUND	SUPERANNUATION CONTRIBUTIONS	651.29
EFT33912	30/01/2014	MANDY LAING	FOOTPATH DEPOSIT REFUND	700.00
EFT33913	30/01/2014	DEAN HILDITCH	FOOTPATH DEPOSIT REFUND	1000.00
EFT33914	30/01/2014	BEN HALEY	HALL AND KEY BOND REFUND	350.00

Chq/EFT	Date	Name	Description	Amount
EFT33915	31/01/2014	MACQUARIE EQUIPMENT RENTALS PTY LTD	CARDIO EQUIPMENT LEASE FOR HARTFIELD PARK RECREATION CENTRE	6377.75
EFT33916	13/02/2014	KALAMUNDA ACCIDENT REPAIR CENTRE	INSURANCE EXCESS FOR REPAIRS TO VEHICLE	2398.33
EFT33917	13/02/2014	CHRIS BROOK BUILDER	PROGRESS PAYMENT FOR CONSTRUCTION OF UNIVERSAL ACCESS PUBLIC TOILET AT KALAMUNDA HISTORY VILLAGE	32486.87
EFT33918	13/02/2014	MOTORCHARGE - WRIGHT EXPRESS FUEL CARDS AUSTRALIA LTD	FUEL - PERIOD ENDING 31 JANUARY 2014	6840.56
EFT33919	13/02/2014	NEVERFAIL SPRINGWATER LTD (KALA LIB)	BOTTLED WATER SUPPLIES / MAINTENANCE	24.00
EFT33920	13/02/2014	JB HI-FI MIDLAND	SUPPLY OF ELECTRICAL GOODS	14.85
EFT33921	13/02/2014	KALAMUNDA GLASS & WINDSCREENS ON WHEELS	GLASS REPAIRS / MAINTENANCE FOR VARIOUS LOCATIONS	1153.05
EFT33922	13/02/2014	CABCHARGE AUSTRALIA LIMITED	CABCHARGE FEES	6.00
EFT33923	13/02/2014	PICTON PRESS	PRINTING OF BROCHURES FOR VARIOUS EVENTS	3743.14
EFT33924	13/02/2014	SHERICH BUILDING SURVEYING & BUILDING SERVICES	ISSUE OF CERTIFICATE OF DESIGN COMPLIANCE FOR THE PROPOSED UNIVERSAL ACCESS TOILET AT THE BILL SHAW RESERVE	594.00
EFT33925	13/02/2014	MACQUARIE EQUIPMENT FINANCE PTY LTD	1ST QUARTER 2014 ADJUSTED IT EQUIPMENT RENTAL OF REMAINING ASSETS	52414.26
EFT33926	13/02/2014	VIP CARPET AND UPHOLSTERY CLEANING SERVICE	CARPET CLEANING AT VARIOUS LOCATIONS	912.00
EFT33927	13/02/2014	ROBYN BEARDSSELL	CONSIGNMENT SUPPLIER ZIG ZAG CULTURAL CENTRE	84.00
EFT33928	13/02/2014	LYNDEN WESSLEY CAMPBELL	RATES REFUND	269.54
EFT33929	13/02/2014	PETER CINANNI & SUNSTYLE HOLDINGS PTY LTD	RATES REFUND	28131.40
EFT33930	13/02/2014	CARMEL VALLEY CHOCOLATES	CONSIGNMENT SUPPLIER ZIG ZAG CULTURAL CENTRE	42.00
EFT33931	13/02/2014	GILL BAXTER	CONSIGNMENT SUPPLIER ZIG ZAG CULTURAL CENTRE	70.00
EFT33932	13/02/2014	GORDON & BEVERLEY DAVIDSON	FOOTPATH DEPOSIT REFUND	1200.00

Chq/EFT	Date	Name	Description	Amount
EFT33933	13/02/2014	SHIRLEY LILLIE GREEN	KEY BOND REFUND	50.00
EFT33934	13/02/2014	ALZTUFF	CONSIGNMENT SUPPLIER ZIG ZAG CULTURAL CENTRE	12.60
EFT33935	13/02/2014	DAVID & ANNA BACCHION	RATES REFUND	5577.00
EFT33936	13/02/2014	WA LOCAL GOVERNMENT SUPERANNUATION PLAN	SUPERANNUATION CONTRIBUTIONS	86455.89
EFT33937	13/02/2014	SHIRE OF KALAMUNDA STAFF SOCIAL CLUB	PAYROLL DEDUCTIONS	992.00
EFT33938	13/02/2014	CHILD SUPPORT AGENCY	PAYROLL DEDUCTIONS	807.88
EFT33939	13/02/2014	AUSTRALIA POST	POSTAL EXPENSES / COUNTER BILLPAY TRANSACTION FEES	5615.58
EFT33940	13/02/2014	COVS PARTS PTY LTD	PLANT / VEHICLE PARTS	1325.97
EFT33941	13/02/2014	GULLY VIEWS NEWSAGENCY	SUBSCRIPTIONS & NEWSPAPERS FOR VARIOUS LOCATIONS	505.88
EFT33942	13/02/2014	KALAMUNDA AUTO ELECTRICS	PLANT / VEHICLE PARTS	2118.80
EFT33943	13/02/2014	MCLEODS BARRISTERS & SOLICITORS	LEGAL EXPENSES	3075.57
EFT33944	13/02/2014	MIDWASTE - TRANSPACIFIC CLEANAWAY PTY LTD	WASTE / RECYCLING SERVICES	979.25
EFT33945	13/02/2014	LANDGATE - VALUATIONS	VALUATIONS FOR VARIOUS LOCATIONS	981.90
EFT33946	13/02/2014	WALKERS HARDWARE (MITRE 10)	HARDWARE SUPPLIES	549.13
EFT33947	13/02/2014	MCKAY EARTHMOVING PTY LTD	PLANT EQUIPMENT AND OPERATOR HIRE FOR VARIOUS LOCATIONS	4885.93
EFT33948	13/02/2014	A & S HILL	ELECTRICIAL REPAIRS / MAINTENANCE FOR VARIOUS LOCATIONS	21798.15
EFT33949	13/02/2014	FASTA COURIERS	COURIER FEES	195.16
EFT33950	13/02/2014	THE WATERSHED WATER SYSTEMS	RETICULATION PARTS FOR VARIOUS RESERVES	1623.18
EFT33951	13/02/2014	FORRESTFIELD MOWER CENTRE	SUPPLY OF HARDWARE / PLANT PARTS	1048.60
EFT33952	13/02/2014	LESMURDIE SAND, SOIL & BOBCAT HIRE	GARDEN / RESERVE SUPPLIES	132.00
EFT33953	13/02/2014	SANDGROPER SEPTICS	SEPTIC / GREASE TANK CLEAN OUT SERVICES AT VARIOUS LOCATIONS	213.37

Chq/EFT	Date	Name	Description	Amount
EFT33954	13/02/2014	MAJOR MOTORS PTY LTD	PLANT / VEHICLE PARTS	517.40
EFT33955	13/02/2014	BRADOCK PODIATRY SERVICES PTY LTD	PODIATRY SERVICES AT JACK HEALEY CENTRE	519.40
EFT33956	13/02/2014	LINDLEY CONTRACTING	PLUMBING REPAIRS / MAINTENANCE FOR VARIOUS LOCATIONS	5764.00
EFT33957	13/02/2014	LESMURDIE FLORIST AND GIFT CENTRE	FLORAL DISPLAY & CLEANING OF TWO EXISTING DISPLAYS	100.00
EFT33958	13/02/2014	KALA BOB KATS PTY LTD	PLANT EQUIPMENT AND OPERATOR HIRE FOR VARIOUS LOCATIONS	6208.95
EFT33959	13/02/2014	GRIMES CONTRACTING PTY LTD	CONTRACTOR BUILDING MAINTENANCE FOR VARIOUS BUILDINGS	9370.54
EFT33960	13/02/2014	HILL TOP TROPHIES (MILPRO WA)	SUPPLY OF NAME BADGES	34.65
EFT33961	13/02/2014	FOODWORKS FRESH FORRESTFIELD	GROCERY SUPPLIES	953.37
EFT33962	13/02/2014	STAFFLINK INDUSTRIAL	HIRE OF TEMPORARY STAFF FOR DEPOT / ADMIN	7294.19
EFT33963	13/02/2014	FLEXI STAFF PTY.LTD.	HIRE OF TEMPORARY STAFF FOR DEPOT / ADMIN	3932.36
EFT33964	13/02/2014	LOVEGROVE TURF SERVICES	TURF MAINTENANCE / SERVICES AT VARIOUS LOCATIONS	1672.00
EFT33965	13/02/2014	KALAMUNDA & DISTRICTS HISTORICAL SOCIETY	CONSIGNMENT SUPPLIER ZIG ZAG CULTURAL CENTRE	133.00
EFT33966	13/02/2014	KALAMUNDA COMMUNITY LEARNING CENTRE	FUNDING CONTRIBUTION FEASIBILITY STUDY - JORGENSEN PARK REDEVELOPMENT MASTERPLAN	10000.00
EFT33967	13/02/2014	SUMMIT HOMES GROUP	PLANNING APPLICATION FEE REFUND	576.00
EFT33968	13/02/2014	KEITH RAE	FOOTPATH DEPOSIT REFUND	1000.00
EFT33969	13/02/2014	CRABBS KALAMUNDA (IGA)	GROCERY SUPPLIES	390.37
EFT33970	13/02/2014	1ST MAIDA VALE SCOUT GROUP	KIDSPORT FUNDING FOR VARIOUS PLAYERS	200.00
EFT33971	13/02/2014	ANDANTINO PTY LTD T/AS OUTDOOR WORLD	BUILDING APPLICATION FEE REFUND	90.00
EFT33972	13/02/2014	VENTURA HOMES PTY LTD	FOOTPATH DEPOSIT REFUNDS	2104.50
EFT33973	13/02/2014	WATTLE GROVE VETERINARY HOSPITAL	VETERINARY FEES	60.00

Chq/EFT	Date	Name	Description	Amount
EFT33974	13/02/2014	HOME GROUP WA PTY LTD	FOOTPATH DEPOSIT REFUND	1000.00
EFT33975	13/02/2014	ALIA TRAINING	REGISTRATION FOR STAFF IN ONLINE COURSE - GROW THE LOVE: PROMOTE YOUR LIBRARY SERVICE	395.00
EFT33976	13/02/2014	COMMISSIONER OF POLICE	VOLUNTEER POLICE CHECKS	52.60
EFT33977	13/02/2014	HAWLEY'S BOBCAT SERVICE	PLANT EQUIPMENT AND OPERATOR HIRE FOR VARIOUS LOCATIONS	10038.60
EFT33978	13/02/2014	HILL TOP GROUP PTY	CONTRACTOR BUILDING MAINTENANCE FOR VARIOUS BUILDINGS	14698.51
EFT33979	13/02/2014	TALONS HIGH SECURITY FENCING	SUPPLY AND INSTALLATION AUTOMATED PALISADE SLIDING GATE AND ROCK WORK AT WORK DEPOT	7073.00
EFT33980	13/02/2014	POOL AND SPA MART / STIHL KALAMUNDA	PLANT / VEHICLE PARTS	6326.00
EFT33981	13/02/2014	MOIRA A COURT	CONSIGNMENT SUPPLIER ZIG ZAG CULTURAL CENTRE	77.00
EFT33982	13/02/2014	TRILOGY SERVICING PTY LTD	AIRCONDITIONING MAINTENANCE / REPAIRS FOR VARIOUS LOCATIONS	3478.13
EFT33983	13/02/2014	DEBBIE JOSE JEWELLERY	CONSIGNMENT SUPPLIER ZIG ZAG CULTURAL CENTRE	122.50
EFT33984	13/02/2014	MCDOWALL AFFLECK PTY LTD	ENGINEERING SERVICES FOR THE ADMINSTRATION CENTRE RAMP DESIGN DETAIL	990.00
EFT33985	13/02/2014	KANYANA WILDLIFE REHABILITATION CENTRE INC	CONSIGNMENT SUPPLIER ZIG ZAG CULTURAL CENTRE	121.60
EFT33986	13/02/2014	RED DIRT ARTS	CONSIGNMENT SUPPLIER ZIG ZAG CULTURAL CENTRE	34.93
EFT33987	13/02/2014	DIEBACK TREATMENT SERVICES	DIEBACK TREATMENT SERVICES	3090.00
EFT33988	13/02/2014	FOOD TECHNOLOGY SERVICES PTY LTD	HIRE OF TEMPORARY STAFF FOR HEALTH DEPARTMENT	2190.10

Chq/EFT	Date	Name	Description	Amount
EFT33989	13/02/2014	ATI-MIRAGE TRAINING SOLUTIONS	REGISTRATION FOR STAFF TO ATTEND NEW SUPERVISOR COURSE	852.50
EFT33990	13/02/2014	PICKERING BROOK HERITAGE GROUP	CONSIGNMENT SUPPLIER ZIG ZAG CULTURAL CENTRE	14.00
EFT33991	13/02/2014	SPECIALISED SECURITY SHREDDING	SECURE DOCUMENT DISPOSAL BIN REMOVAL AND REPLACEMENT	33.00
EFT33992	13/02/2014	GEMMILL HOMES	FOOTPATH DEPOSIT REFUNDS	2000.00
EFT33993	13/02/2014	HERTZ AUSTRALIA PTY LTD	HIRE FEES OF 4X4 UTILITY VEHICLE FOR FIRE HAZARD INSPECTOR	4098.60
EFT33994	13/02/2014	DAVID & MELANIE LLEWELLYN	FOOTPATH DEPOSIT REFUND	1000.00
EFT33995	13/02/2014	DAVID H AND JOAN M WILLCOX	BUILDING FEES REFUND	40.50
EFT33996	13/02/2014	SCOOP PUBLISHING	ADVERTISEMENT IN SCOOP PERTH GUIDE	2574.00
EFT33997	13/02/2014	AFFORDABLE LIVING HOMES	FOOTPATH DEPOSIT REFUND	1000.00
EFT33998	13/02/2014	HILLS GAS SUPPLY	SUPPLY OF BOTTLED GAS FOR VARIOUS LOCATIONS	230.00
EFT33999	13/02/2014	MAIDA VALE DELIVERY ROUND	PAPER AND MAGAZINES DELIVERIES FOR HIGH WYCOMBE LIBRARY	70.95
EFT34000	13/02/2014	EASTERN REGION SECURITY	SECURITY SERVICES TO VARIOUS SHIRE BUILDINGS	5476.21
EFT34001	13/02/2014	G.D.CHARLTON	PODIATRY SERVICES AT JACK HEALEY CENTRE	685.79
EFT34002	13/02/2014	GREAT AUSSIE PATIOS	FOOTPATH DEPOSIT REFUND	1200.00
EFT34003	13/02/2014	SECURE TRAFFIC	TRAFFIC MANAGEMENT FOR VARIOUS LOCATIONS	18155.50
EFT34004	13/02/2014	JACKSON MCDONALD LAWYERS	LEGAL EXPENSES	29694.30
EFT34005	13/02/2014	EASIFLEET MANAGEMENT	STAFF CONTRIBUTIONS TO NOVATED LEASES	9578.80
EFT34006	13/02/2014	DEAN MICHAEL PRONTELLI	RATES REFUND	448.76
EFT34007	13/02/2014	NATALIE WARBURTON - ANATOMY DESIGNS	CONSIGNMENT SUPPLIER ZIG ZAG CULTURAL CENTRE	7.00

Chq/EFT	Date	Name	Description	Amount
EFT34008	13/02/2014	AUSTRALIAN SUPERANNUATION	SUPERANNUATION CONTRIBUTIONS	1189.35
EFT34009	13/02/2014	MADE 4 YOU (LYGIA)	CONSIGNMENT SUPPLIER ZIG ZAG CULTURAL CENTRE	7.00
EFT34010	13/02/2014	BRG CONSTRUCTIONS	FOOTPATH DEPOSIT REFUND	1000.00
EFT34011	13/02/2014	SHIRLEY SPENCER	CONSIGNMENT SUPPLIER ZIG ZAG CULTURAL CENTRE	73.50
EFT34012	13/02/2014	ROSE SMART	MAINTAIN ROSE BEDS AT VARIOUS LOCATIONS	986.00
EFT34013	13/02/2014	JONATHAN PAXMAN	KEY BOND REFUND	50.00
EFT34014	13/02/2014	CAMERON SCOTT GIBSON	FOOTPATH DEPOSIT REFUND	1000.00
EFT34015	13/02/2014	PETER TUCATS SUPERANNUATION FUND	SUPERANNUATION CONTRIBUTIONS	250.70
EFT34016	13/02/2014	BINDALE SUPERANNUATION FUND	SUPERANNUATION CONTRIBUTIONS	70.69
EFT34017	13/02/2014	CHRIS ANTILL PLANNING & URBAN DESIGN CONSULTANT	PROGRESS PAYMENT - FORRESTFIELD DISTRICT CENTRE - WOODLUPINE CREEK MANAGEMENT PLAN & URBAN DESIGN GUIDELINES	10203.60
EFT34018	13/02/2014	NEVERFAIL SPRINGWATER LTD (PETER ANDERTON CEN)	BOTTLED WATER SUPPLIES / MAINTENANCE	30.30
EFT34019	13/02/2014	NEVERFAIL SPRINGWATER LTD (ZZCC)	BOTTLED WATER SUPPLIES / MAINTENANCE	26.65
EFT34020	13/02/2014	SWITCH HOMES FOR LIVING (PINDAN PROJECT HOMES)	FOOTPATH DEPOSIT REFUND	950.00
EFT34021	13/02/2014	MARRA & ASSOCIATES	ENGINEERING DETAIL FOR WORKS AT WALLISTON TRANSFER STATION	495.00
EFT34022	13/02/2014	BRIKMAKERS	SUPPLY OF LIMESTONE BLOCKS	287.34
EFT34023	13/02/2014	LIBERTY OIL WESTERN AUSTRALIA PTY LTD	SUPPLY OF FUEL	30257.20
EFT34024	13/02/2014	CONTRAFLOW	TRAFFIC MANAGEMENT FOR VARIOUS LOCATIONS	4853.75
EFT34025	13/02/2014	JOSHUA S JENKINS	FOOTPATH DEPOSIT REFUND	1000.00
EFT34026	13/02/2014	PH CONCRETE (WA) PTY LTD	FOOTPATH MAINTENANCE / REPAIRS FOR VARIOUS LOCATIONS	10749.34
EFT34027	13/02/2014	GUNDRY'S CARPET CHOICE	REPAIR WORKS TO VINYL FLOOR - SERVER ROOM	290.00

Chq/EFT	Date	Name	Description	Amount
EFT34028	13/02/2014	FORRESTFIELD TEEBALL/SOFTBALL ASSOCIATION INC	HALL AND KEY BOND REFUND	550.00
EFT34029	13/02/2014	MANAWA MAI TAWHITI	KEY BOND REFUND	50.00
EFT34030	13/02/2014	BENCHMARK MAINTENANCE SERVICES	CONTRACTOR BUILDING MAINTENANCE VARIOUS BUILDINGS	396.00
EFT34031	13/02/2014	DAVLEY BUILDING PTY LTD T/AS GRANNY FLATS WA	FOOTPATH DEPOSIT REFUND	3000.00
EFT34032	13/02/2014	FONZ'S BOBCAT & TRUCK HIRE	PLANT EQUIPMENT AND OPERATOR HIRE FOR VARIOUS LOCATIONS	6347.99
EFT34033	13/02/2014	NANCY GILLESPIE	CONSIGNMENT SUPPLIER ZIG ZAG CULTURAL CENTRE	35.00
EFT34034	13/02/2014	BEAVER TREE SERVICES	TREE REMOVAL / UNDER POWERLINE PRUNING FOR VARIOUS LOCATIONS	39314.55
EFT34035	13/02/2014	VISION SUPER PTY LTD	SUPERANNUATION CONTRIBUTIONS	758.02
EFT34036	13/02/2014	WEST-SURE GROUP	CASH IN TRANSIT SERVICES - JANUARY 2014	2310.00
EFT34037	13/02/2014	PATRICIA MOSS	CONSIGNMENT SUPPLIER ZIG ZAG CULTURAL CENTRE	12.60
EFT34038	13/02/2014	RYLAN PTY LTD	SUPPLY OF KERBING AT VARIOUS LOCATIONS	2079.00
EFT34039	13/02/2014	KALEIDOSCOPE CRAFT KITS	DRY CLEANING / WASHING SERVICES FOR HARTFIELD PARK RECREATION CENTRE	60.00
EFT34040	13/02/2014	SIMSAI CONSTRUCTION GROUP PTY LTD	FOOTPATH DEPOSIT REFUND	1000.00
EFT34041	13/02/2014	LANDMARK PRODUCTS LIMITED	SUPPLY AND INSTALL SHELTERS AND FURNITURE	9218.00
EFT34042	13/02/2014	FIRE 4 HIRE	VERGE / RESERVE MAINTENANCE AT VARIOUS LOCATIONS	2873.75
EFT34043	13/02/2014	MATERA CONSTRUCTION	FOOTPATH DEPOSIT REFUND	1200.00
EFT34044	13/02/2014	ANGELA CANCI	PODIATRY SERVICES AT JACK HEALEY SERVICES	432.84
EFT34045	13/02/2014	SUPALUX PAINT CO PTY LTD	PAINTING MAINTENANCE SERVICES AT VARIOUS LOCATIONS	41724.14

Chq/EFT	Date	Name	Description	Amount
EFT34046	13/02/2014	UNIQUE WASTE MANAGEMENT SERVICES	HIRE OF TRUCK/OPERATOR WALLISTON TRANSFER STATION	10741.50
EFT34047	13/02/2014	STRATEGEN ENVIRONMENTAL CONSULTANTS	PROFESSIONAL SERVICES - WILKINS RD MRS AMENDMENT / EPBC REFERRAL	1155.00
EFT34048	13/02/2014	CLAIRE O'NEILL - CLAIRE'S EMBROIDERY	CONSIGNMENT SUPPLIER ZIG ZAG CULTURAL CENTRE	165.20
EFT34049	13/02/2014	LINDA STONES	CONSIGNMENT SUPPLIER ZIG ZAG CULTURAL CENTRE	171.85
EFT34050	13/02/2014	IAN MOSS	CONSIGNMENT SUPPLIER ZIG ZAG CULTURAL CENTRE	147.00
EFT34051	13/02/2014	AROUNDABOUT GARDENING SERVICES	VERGE / GARDEN MAINTENANCE FOR VARIOUS LOCATIONS	1881.00
EFT34052	13/02/2014	LEWIS FAMILY TRUST	BUILDING MAINTENANCE TELEPHONE / SECURITY LINE REPAIR WORK	2365.00
EFT34053	13/02/2014	KRISTY LEE MOLLIKA	MORNING MUSIC	1250.00
EFT34054	13/02/2014	PETER FALCONER	CONSIGNMENT SUPPLIER ZIG ZAG CULTURAL CENTRE	40.60
EFT34055	13/02/2014	MARY FORWARD	CONSIGNMENT SUPPLIER ZIG ZAG CULTURAL CENTRE	8.05
EFT34056	13/02/2014	FOXTEL	MONTHLY SUBSCRIPTION	200.00
EFT34057	13/02/2014	HANS SCHWALB	CONSIGNMENT SUPPLIER ZIG ZAG CULTURAL CENTRE	10.50
EFT34058	13/02/2014	KALAJOS SCHOOL OF GYMNASTICS	KIDSPORT FUNDING FOR VARIOUS PLAYERS	400.00
EFT34059	13/02/2014	ADDSTYLE CONSTRUCTIONS PTY LTD	FOOTPATH DEPOSIT REFUND	1000.00
EFT34060	13/02/2014	THE ARTFUL FLOWE - FELICIA LOWE	CONSIGNMENT SUPPLIER ZIG ZAG CULTURAL CENTRE	55.65
EFT34061	13/02/2014	DAVID GREEN	CONSIGNMENT SUPPLIER ZIG ZAG CULTURAL CENTRE	13.97
EFT34062	13/02/2014	MPJ (WA) PTY LTD	SUPERANNUATION CONTRIBUTIONS	442.52

Chq/EFT	Date	Name	Description	Amount
EFT34063	13/02/2014	REFLECTIONS WINDOW CLEANING	WINDOW CLEANING SERVICES FOR VARIOUS LOCATIONS	1300.00
EFT34064	13/02/2014	DMC CLEANING	CLEANING OF VARIOUS SHIRE BUILDINGS	237.40
EFT34065	13/02/2014	NICHOLAS TAYLOR	CONSIGNMENT SUPPLIER ZIG ZAG CULTURAL CENTRE	52.50
EFT34066	13/02/2014	SILK ON SILK (ROSEMARY LONSDALE)	CONSIGNMENT SUPPLIER ZIG ZAG CULTURAL CENTRE	84.00
EFT34067	13/02/2014	S & J DEVELOPMENTS P/L T/AS LANSDOWN CONSTRUCTION	SUPERVISION AND BUILDING INSPECTIONS INSTALLATION OF TRANSPORTABLE CAT POUND TO BCA REQUIREMENTS	1100.00
EFT34068	13/02/2014	CUROST MILK SUPPLY	MILK SUPPLY ADMINISTRATION BUILDING AND DEPOT	199.47
EFT34069	13/02/2014	DIANE FLORENCE KENNEDY	RATES REFUND	200.00
EFT34070	13/02/2014	MAVIS PASKULICH	CONSIGNMENT SUPPLIER ZIG ZAG CULTURAL CENTRE	38.50
EFT34071	13/02/2014	BEESWAX CREATIONS	CONSIGNMENT SUPPLIER ZIG ZAG CULTURAL CENTRE	37.73
EFT34072	13/02/2014	GERARD THOMAS	REFUND OF EMPLOYMENT CONTRACT ALLOWANCE	264.24
EFT34073	13/02/2014	PERTH SCOTTISH FIDDLERS	KEY BOND REFUND	50.00
EFT34074	13/02/2014	FLOORGUARD	FLOOR SANDING AND RECOATING WORKS AT HARTFIELD PARK SQUASH COURTS	1039.50
EFT34075	13/02/2014	MPK TREE SERVICES	TREE REMOVAL / BRANCH PRUNING AT VARIOUS LOCATIONS	11844.25
EFT34076	13/02/2014	TURFWORKS WA PTY LTD	MOWING OF GRASSES ON RESERVES	4628.00
EFT34077	13/02/2014	PRICEWATERHOUSECOOPERS	PROFESSIONAL SERVICES - GST SERVICES RENDERED FOR THE PERIOD ENDED 24 JANUARY 2014	12925.00

Chq/EFT	Date	Name	Description	Amount
EFT34078	13/02/2014	A1 TROJAN PEST CONTROL	PEST CONTROL SERVICES FOR VARIOUS LOCATIONS	189.00
EFT34079	13/02/2014	DONALD CHARLES TYLER	CONTRIBUTION TO TYLER SPRINGS ESTATE	1020.36
EFT34080	13/02/2014	VISSYART	CONSIGNMENT SUPPLIER ZIG ZAG CULTURAL CENTRE	7.28
EFT34081	13/02/2014	IRRIGATION WA PTY LTD	IRRIGATION MAINTENANCE AT TYLER SPRINGS ESTATE	132.00
EFT34082	13/02/2014	NEVERFAIL SPRINGWATER LTD (ADMIN OFFICE)	BOTTLED WATER SUPPLIES / MAINTENANCE	206.05
EFT34083	13/02/2014	OFF PEN PUBLISHING - BETH BAKER	CONSIGNMENT SUPPLIER ZIG ZAG CULTURAL CENTRE	20.65
EFT34084	13/02/2014	STAN THE TYRE MAN (STAN'S TYRE SERVICE WA)	PLANT / VEHICLE PARTS	2244.00
EFT34085	13/02/2014	DATACOM SYSTEMS (WA) PTY LTD	PROFESSIONAL SERVICES FOR INFRASTRUCTURE BUILD AND DEPLOYMENT	31258.15
EFT34086	13/02/2014	WOBBLYJULES INVESTMENTS FUND	SUPERANNUATION CONTRIBUTIONS	203.69
EFT34087	13/02/2014	ALLEASING PTY LTD	LEASING CONTRACT FOR THE IBM SAN - NETWORK STORAGE SOLUTION	22814.28
EFT34088	13/02/2014	GRAHAM STIMSON	CONSIGNMENT SUPPLIER ZIG ZAG CULTURAL CENTRE	119.00
EFT34089	13/02/2014	BALLIGART - HELEN LOCK	CONSIGNMENT SUPPLIER ZIG ZAG CULTURAL CENTRE	13.65
EFT34090	13/02/2014	FLEETCARE PTY LTD	STAFF CONTRIBUTIONS TO NOVATED LEASING	2788.28
EFT34091	13/02/2014	IMAGININGS LIFE IMAGES BY SUE	CONSIGNMENT SUPPLIER ZIG ZAG CULTURAL CENTRE	22.05
EFT34092	13/02/2014	WARREN & MELISSA SMEDLEY	RATES REFUND	438.74
EFT34093	13/02/2014	AUSTRALIAN CATHOLIC SUPERANNUATION & RETIREMENT FUND (ACSRF)	SUPERANNUATION CONTRIBUTIONS	298.38
EFT34094	13/02/2014	ONE DEGREE ADVISORY PTY LTD	WORKSHOP PLANNING	1784.75
EFT34095	13/02/2014	LEBAR INVESTMENTS PTY LTD	PLANNING APPLICATION FEE REFUND	1568.00

Chq/EFT	Date	Name	Description	Amount
EFT34096	13/02/2014	PETER WEBB	CONSIGNMENT SUPPLIER ZIG ZAG CULTURAL CENTRE	10.47
EFT34097	13/02/2014	BIJOUX ART ARTISANAT GALERIE	CONSIGNMENT SUPPLIER ZIG ZAG CULTURAL CENTRE	24.50
EFT34098	13/02/2014	WET2DRY PLUMBING	GENERAL PLUMBING SERVICES TO VARIOUS LOCATIONS	2655.38
EFT34099	13/02/2014	M GRIFFITHS FAUNA SURVEYS	FAUNA MONITORING CAMERAS	1820.00
EFT34100	13/02/2014	KALAMUNDA PATISSERIE	CATERING SUPPLIES	12.00
EFT34101	13/02/2014	LINDAS BOOKS / ROLEYSTONE COURIER	CONSIGNMENT SUPPLIER ZIG ZAG CULTURAL CENTRE	18.20
EFT34102	13/02/2014	BRENDAS CLAY CRAFT	CONSIGNMENT SUPPLIER ZIG ZAG CULTURAL CENTRE	16.80
EFT34103	13/02/2014	THE SULLIVAN SUPER FUND	SUPERANNUATION CONTRIBUTIONS	651.29
EFT34104	13/02/2014	WAITAWHILE ART	CONSIGNMENT SUPPLIER ZIG ZAG CULTURAL CENTRE	32.65
EFT34105	13/02/2014	MIKE GREEN T/A PANORAMA ARTS ARMADALE	CONSIGNMENT SUPPLIER ZIG ZAG CULTURAL CENTRE	51.10
EFT34106	13/02/2014	AMAZING CLEAN BLINDS LESMURDIE	WINDOW BLIND CLEANING REPAIR AND REPLACEMENT SERVICES AT VARIOUS LOCATIONS	555.00
EFT34107	13/02/2014	BARRATT CONSTRUCTION	FOOTPATH DEPOSIT REFUND	1000.00
EFT34108	13/02/2014	ALLAREAS EARTHMOVING	FOOTPATH DEPOSIT REFUND	1000.00
EFT34109	13/02/2014	CERCON BUILDING - (QUALITY GROUP SERVICES PTY LTD)	FOOTPATH DEPOSIT REFUND	1000.00
EFT34110	13/02/2014	RONALD PENDAL	TRAVEL COMMUNITY VISITORS SCHEME REFUND	50.00
EFT34111	13/02/2014	CHRISTINE EARNSHAW	HALL AND KEY BOND REFUND	1050.00
EFT34112	13/02/2014	BRIAN HOLMES	KEY BOND REFUND	50.00
EFT34113	13/02/2014	MD ZAHIDUZZAMAN	HALL AND KEY BOND REFUND	350.00
EFT34114- EFT34416		EFT PAYMENTS CANCELLED DUE TO SYSTEM ERROR		

Chq/EFT	Date	Name	Description	Amount
EFT34417	27/02/2014	BARNETTS (WA) PTY LTD	HARDWARE SUPPLIES	293.52
EFT34418	27/02/2014	CHRIS BROOK BUILDER	PROGRESS PAYMENT CLAIM - CONSTRUCTION OF UNIVERSAL ACCESS PUBLIC TOILET AT KALAMUNDA HISTORY VILLAGE	21695.57
EFT34419	27/02/2014	STYLECORP CORPORATE WEAR	SUPPLY OF UNIFORM FOR VARIOUS STAFF MEMBERS	2134.77
EFT34420	27/02/2014	MOTORCHARGE - WRIGHT EXPRESS FUEL CARDS AUSTRALIA LTD	FUEL - PERIOD ENDING 15 FEBRUARY 2014	8548.00
EFT34421	27/02/2014	PLE COMPUTERS	SUPPLY OF SOFTWARE ACCESSORIES	372.00
EFT34422	27/02/2014	SALMAT MEDIAFORCE PTY LTD	DISTRIBUTION OF FLYERS FOR EVENTS WITHIN THE SHIRE	2278.12
EFT34423	27/02/2014	BLUE RIBBON PET FOODS	SUPPLY OF DOG FOOD FOR POUND	28.00
EFT34424	27/02/2014	KALAMUNDA GLASS & WINDSCREENS ON WHEELS	GLASS REPAIRS / MAINTENANCE FOR VARIOUS LOCATIONS	1871.24
EFT34425	27/02/2014	LANDMARK ENGINEERING AND DESIGN	SUPPLY AND INSTALL SHELTER AND PARK FUNITURE FOR PINKER RESERVE	10092.50
EFT34426	27/02/2014	IMAGE EMBROIDERY	SUPPLY OF UNIFORM FOR VARIOUS STAFF MEMBERS	87.34
EFT34427	27/02/2014	WILEY AIR TRANSPORT SERVICES & HIGHLAND EXPRESS	COURIER SERVICES	378.40
EFT34428	27/02/2014	COUNTRYWIDE PUBLICATIONS	1/2 PAGE MONTHLY ADVERT FOR ZZCC FOR YOUR GUIDE TO PERTH AND FREMANTLE	500.00
EFT34429	27/02/2014	COMMUNITYWEST (INC)	SUPPLY OF TEXT BOOKS- HEALTHY LIVING WITH CHRONIC CONDITIONS	247.50
EFT34430	27/02/2014	OLK & ASSOCIATES	ARCHITECURAL FEES - PROPOSED BUILDING WORKS AT THE WALLISTON TRANSFER STATION	3168.00
EFT34431	27/02/2014	COLLECTOR OF PUBLIC MONIES (CENTRELINK)	CENTREPAY - TRANSACTION CHARGES FOR 01/12/13 - 31/12/13	69.96
EFT34432	27/02/2014	NEVERFAIL SPRINGWATERLTD (FORRESTFIELD LIB)	BOTTLED WATER SUPPLIES / MAINTENANCE	31.60

Chq/EFT	Date	Name	Description	Amount
EFT34433	27/02/2014	SETON AUSTRALIA PTY LTD	SAFETY EQUIPMENT / SUPPLIES	282.61
EFT34434	27/02/2014	PAPER-PAK PTY LTD	LIBRARY STATIONERY SUPPLIES	323.40
EFT34435	27/02/2014	SHERICH BUILDING SURVEYING & BUILDING SERVICES	BUILDING SURVEYING SERVICES	3795.00
EFT34436	27/02/2014	THE PLANNING GROUP WA PTY LTD	PROFESSIONAL FEES - MRS AMENDMENT AT FORRESTFIELD AND PICKERING BROOK	4851.00
EFT34437	27/02/2014	ASSETIC AUSTRALIA PTY LTD	ANNUAL SUPPORT AND MAINTENANCE FOR ASSETIC PREMIUM - JULY 2013 TO JUNE 2014	16500.00
EFT34438	27/02/2014	TOP OF THE LADDER GUTTER CLEANING	GUTTER CLEANING SERVICES FOR VARIOUS LOCATIONS	12177.00
EFT34439	27/02/2014	ALL EARTH GROUP	DISPOSAL OF ROAD SWEEPINGS FROM LAWNBROOK AND DAWSON ROAD TIP SITES	16387.28
EFT34440	27/02/2014	BEES HIRE & SALES	SCAFFOLD AND VARIOUS HIRE EQUIPMENT FOR VARIOUS LOCATIONS	2983.20
EFT34441	27/02/2014	VIP CARPET AND UPHOLSTERY CLEANING SERVICE	CARPET CLEANING AT VARIOUS LOCATIONS	334.00
EFT34442	27/02/2014	TOTALLY WORKWEAR MIDLAND	SUPPLY OF PROTECTIVE CLOTHING	470.65
EFT34443	27/02/2014	SEAMLESS (AUST) PTY LTD	SEAMLESS CMS ANNUAL MAINTENANCE AND SUPPORT - 01/10/13 - 30/09/14	13722.50
EFT34444	27/02/2014	CIRCUITWEST INC.	2014 CIRCUITWEST MEMBERSHIP	249.80
EFT34445	27/02/2014	WHITE ROOM FRAMING STUDIOS	SUPPLY OF PICTURE HOOKS	518.23
EFT34446	27/02/2014	ALLION LEGAL	GENERAL EMPLOYMENT SERVICES	6091.90
EFT34447	27/02/2014	J & K HOPKINS	SUPPLY OF OFFICE FURNITURE FOR PETER ANDERTON CENTRE	2382.00
EFT34448	27/02/2014	EUGENE & ANNA KUDRAY	RATES REFUND	249.86
EFT34449	27/02/2014	GERALDINE SUSAN SMAILES	THANK A VOLUNTEER DAY	80.00
EFT34450	27/02/2014	RAINVILLE INVESTMENTS PTY LTD	RATES REFUND	1906.08
EFT34451	27/02/2014	COLIN C & SANDRA M SMITH	FOOTPATH DEPOSIT REFUND	1000.00
EFT34452	27/02/2014	ALLAN MORTON	COUNCILLOR ALLOWANCE -28/02/14 - 27/03/14 -	1965.39

Chq/EFT	Date	Name	Description	Amount
EFT34453	27/02/2014	DAVID & KATHLEEN MASTERS	RATES REFUND	311.22
EFT34454	27/02/2014	INA CHAPMAN	FOOTPATH DEPOSIT REFUND	1200.00
EFT34455	27/02/2014	GRANT & CHERYL HAIGH	FOOTPATH DEPOSIT REFUND	700.00
EFT34456	27/02/2014	WA LOCAL GOVERNMENT SUPERANNUATION PLAN	SUPERANNUATION CONTRIBUTIONS	86528.48
EFT34457	27/02/2014	SHIRE OF KALAMUNDA STAFF SOCIAL CLUB	PAYROLL DEDUCTIONS	396.00
EFT34458	27/02/2014	CHILD SUPPORT AGENCY	PAYROLL DEDUCTIONS	807.88
EFT34459	27/02/2014	BUNNINGS BUILDING SUPPLIES	HARDWARE SUPPLIES FOR VARIOUS LOCATIONS	630.04
EFT34460	27/02/2014	COVS PARTS PTY LTD	PLANT / VEHICLE PARTS	2370.20
EFT34461	27/02/2014	CROMMELINS MACHINERY	PLANT / VEHICLE PARTS	553.25
EFT34462	27/02/2014	LANDGATE	LAND ENQUIRY	1416.00
EFT34463	27/02/2014	KALAMUNDA TOYOTA	PLANT / VEHICLE PARTS	457.78
EFT34464	27/02/2014	MCLEODS BARRISTERS & SOLICITORS	LEGAL EXPENSES	2822.07
EFT34465	27/02/2014	SESCO SECURITY CO	SECURITY MONITORING SERVICES FOR VARIOUS LOCATIONS	7363.00
EFT34466	27/02/2014	STATE LIBRARY OF W.A.	LOST AND DAMAGED BOOKS - KALAMUNDA LIBRARY	412.50
EFT34467	27/02/2014	LANDGATE - VALUATIONS	VALUATIONS FOR VARIOUS LOCATIONS	760.65
EFT34468	27/02/2014	WA LIBRARY SUPPLIES PTY LTD	LIBRARY / OFFICE SUPPLIES	839.65
EFT34469	27/02/2014	WALKERS HARDWARE (MITRE 10)	HARDWARE SUPPLIES	352.31
EFT34470	27/02/2014	ECHO NEWSPAPER	ADVERTISING FOR VARIOUS JOBS / EVENTS	1400.00
EFT34471	27/02/2014	ROCLA QUARRY PRODUCTS	GARDEN / RESERVE SUPPLIES	791.65
EFT34472	27/02/2014	EASTERN METROPOLITAN REGIONAL COUNCIL	DOMESTIC / WASTE CHARGES - RED HILL TIP EMRC ENVIRONMENTAL SERVICES PROJECTS 2013/14 EASTERN HILLS CATCHMENT MANAGEMENT PROGRAMME. EHCMP END OF YEAR VOLUNTEER EVENT. ACER, SPECIFICALLY THE COORDINATION AND IMPLEMENTATION OF	302996.58

Chq/EFT	Date	Name	Description	Amount
			SHIRES CARBON REDUCTION STRATEGY AND VARIOUS DISPOSAL FEES	
EFT34473	27/02/2014	BORAL CONSTRUCTION MATERIALS GROUP	ROAD MATERIALS FOR VARIOUS LOCATIONS	2582.03
EFT34474	27/02/2014	ZIPFORM PTY LTD	SUPPLY OF BASE STOCK FOR RATES	335.50
EFT34475	27/02/2014	OFFICE LINE	OFFICE FURNITURE SUPPLIES	916.30
EFT34476	27/02/2014	3 VODAFONE HUTCHISON AUSTRALIA PTY LTD	COMMUNICATION EXPENSES	2999.99
EFT34477	27/02/2014	FASTA COURIERS	COURIER FEES	216.23
EFT34478	27/02/2014	THE WATERSHED WATER SYSTEMS	RETICULATION PARTS FOR VARIOUS RESERVES	451.28
EFT34479	27/02/2014	MCINTOSH & SON	PLANT / VEHICLE PARTS	2511.16
EFT34480	27/02/2014	KINETIC HEALTH GROUP LTD	PREPLACEMENT MEDICALS / BASELINE HEARING TESTS	796.40
EFT34481	27/02/2014	SANDGROPER SEPTICS	SEPTIC / GREASE TANK CLEAN OUT SERVICES AT VARIOUS LOCATIONS	368.59
EFT34482	27/02/2014	CANON AUSTRALIA PTY LTD	PHOTOCOPYING CHARGES	11.85
EFT34483	27/02/2014	ALSCO LINEN SERVICE	LINEN HIRE / LAUNDRY SERVICES	1620.52
EFT34484	27/02/2014	BRADOCK PODIATRY SERVICES PTY LTD	PODIATRY SERVICES AT JACK HEALEY CENTRE	1038.80
EFT34485	27/02/2014	DAYNITE TOWING SERVICE (WA) PTY LTD (FORMERLEY MOBITOW PTY LTD)	TOWING SERVICES	325.60
EFT34486	27/02/2014	LINDLEY CONTRACTING	PLUMBING REPAIRS / MAINTENANCE FOR VARIOUS LOCATIONS	5480.20
EFT34487	27/02/2014	KALA BOB KATS PTY LTD	PLANT EQUIPMENT AND OPERATOR HIRE FOR VARIOUS LOCATIONS	1627.45
EFT34488	27/02/2014	STEWART & HEATON CLOTHING CO PTY LTD	FIRE PROTECTION WEAR / SUPPLIES	158.73
EFT34489	27/02/2014	HALLITE SEALS AUSTRALIA PTY (TRANSEALS)	PLANT / VEHICLE PARTS	62.70

Chq/EFT	Date	Name	Description	Amount
EFT34490	27/02/2014	DEPARTMENT OF PREMIER & CABINET - STATE LAW PUBLISHER	GOVERNMENT GAZETTE ADVERTISING	95.20
EFT34491	27/02/2014	ACTIMED AUSTRALIA PTY LTD	MEDICAL SUPPLIES FOR PODIARTIST	591.50
EFT34492	27/02/2014	STONETRADERS PTY LTD	GARDEN / RESERVE SUPPLIES	1075.36
EFT34493	27/02/2014	GRONBEK SECURITY	SECURITY KEY SERVICES TO VARIOUS SHIRE BUILDINGS	246.29
EFT34494	27/02/2014	GRIMES CONTRACTING PTY LTD	CONTRACTOR BUILDING MAINTENANCE FOR VARIOUS BUILDINGS	4015.07
EFT34495	27/02/2014	BGC ASPHALT	ROAD MATERIALS FOR VARIOUS LOCATIONS	1185.54
EFT34496	27/02/2014	WA LIMESTONE COMPANY	ROAD MATERIALS FOR VARIOUS LOCATIONS	594.63
EFT34497	27/02/2014	WESTSIDE FIRE SERVICES	TESTING AND INSPECTION OF FIRE EQUIPMENT / SUPPLIES	900.90
EFT34498	27/02/2014	STAPLES AUSTRALIA PTY LTD(CORPORATE EXPRESS AUSTRALIA LTD)	STATIONERY / OFFICE SUPPLIES	1766.05
EFT34499	27/02/2014	HILL TOP TROPHIES (MILPRO WA)	SUPPLY OF NAME BADGES	61.05
EFT34500	27/02/2014	BRICK CONCEPTS	CROSSOVER MAINTENANCE / REPAIRS FOR VARIOUS LOCATIONS	2710.00
EFT34501	27/02/2014	BLADON WA PTY LTD	MEMORABILIA SUPPLIES	1866.04
EFT34502	27/02/2014	FULTON HOGAN INDUSTRIES PTY LTD	ROAD MATERIALS FOR VARIOUS LOCATIONS	224612.04
EFT34503	27/02/2014	WESTERN AUSTRALIAN ELECTORAL COMMISSION	WESTERN AUSTRALIAN ELECTORAL COMMISSION 2013 LOCAL GOVERNMENT ORDINARY ELECTION	105607.24
EFT34504	27/02/2014	JOHN GIARDINA	COUNCILLOR ALLOWANCE - 28/02/14 - 27/03/14	3119.24
EFT34505	27/02/2014	GEOFF STALLARD	COUNCILLOR ALLOWANCE - 28/02/14 - 27/03/14	1965.39
EFT34506	27/02/2014	FOODWORKS FRESH FORRESTFIELD	GROCERY SUPPLIES	1158.60
EFT34507	27/02/2014	WA LOCAL GOVERNMENT ASSOCIATION (ADVERTISING)	ADVERTISING FOR VARIOUS JOBS / EVENTS	3733.25
EFT34508	27/02/2014	IT VISION	UPGRADE OF SYNERGY SOFT LICENCES AND SYNERGY SOFT UPGRADE	3996.63
EFT34509	27/02/2014	KALAMUNDA YOUTH SWING BAND	HALL, KEY AND GRAND PAINO BOND REFUND	860.00

Chq/EFT	Date	Name	Description	Amount
EFT34510	27/02/2014	MACDONALD JOHNSTON ENGINEERING	PLANT / VEHICLE PARTS	2237.94
EFT34511	27/02/2014	LO-GO APPOINTMENTS	HIRE OF TEMPORARY STAFF FOR DEPOT / ADMIN	2151.60
EFT34512	27/02/2014	STAFFLINK INDUSTRIAL	HIRE OF TEMPORARY STAFF FOR DEPOT / ADMIN	10683.86
EFT34513	27/02/2014	BRIDGESTONE AUSTRALIA LTD	PLANT / VEHICLE PARTS	2296.55
EFT34514	27/02/2014	FLEXI STAFF PTY.LTD.	HIRE OF TEMPORARY STAFF FOR DEPOT / ADMIN	3932.36
EFT34515	27/02/2014	BENARA NURSERIES	GARDEN / VERGE SUPPLIES	262.36
EFT34516	27/02/2014	HOMESTART	FOOTPATH DEPOSIT REFUND	1000.00
EFT34517	27/02/2014	ONESTEEL DISTRIBUTION (MIDALIA STEEL)	PLANT / VEHICLE PARTS	1460.57
EFT34518	27/02/2014	J BLACKWOOD & SON LIMITED	PROTECTIVE WEAR / SUPPLIES	2256.46
EFT34519	27/02/2014	EASTERN HILLS SAWS AND MOWERS	PLANT / VEHICLE PARTS	264.00
EFT34520	27/02/2014	AIR LIQUIDE WA PTY LTD	GAS BOTTLE FACILITY FEE	129.47
EFT34521	27/02/2014	JR & A HERSEY PTY LTD	HARDWARE SUPPLIES	90.75
EFT34522	27/02/2014	REPCO BRAKE & CLUTCH	PLANT / VEHICLE PARTS	173.14
EFT34523	27/02/2014	WALLISTON PRIMARY SCHOOL	HALL AND KEY BOND REFUND	350.00
EFT34524	27/02/2014	CRABBS KALAMUNDA (IGA)	GROCERY SUPPLIES	473.62
EFT34525	27/02/2014	VENTURA HOMES PTY LTD	FOOTPATH DEPOSIT REFUND	1200.00
EFT34526	27/02/2014	CONTENT LIVING PTY LTD	FOOTPATH DEPOSIT REFUNDS	2200.00
EFT34527	27/02/2014	THE HONDA SHOP	PLANT / VEHICLE PARTS	799.00
EFT34528	27/02/2014	LINCOLN GUY BUCKLEY	FOOTPATH DEPOSIT REFUND	1000.00
EFT34529	27/02/2014	WA & J KING PTY LTD	GARDEN SUPPLIES FOR VARIOUS LOCATIONS	694.00
EFT34530	27/02/2014	KALAMUNDA CRICKET CLUB	TURF MAINTENANCE GRANT 2013/2014 SEASON	11500.00
EFT34531	27/02/2014	COMMISSIONER OF POLICE	VOLUNTEER POLICE CHECKS	60.40
EFT34532	27/02/2014	SWAN MARQUEES AND PARTY HIRE	EXTRA EQUIPMENT FOR SENIORS WEEK DANCE - FRIDAY 15 NOVEMBER 2013.	56.50
EFT34533	27/02/2014	HAWLEY'S BOBCAT SERVICE	PLANT EQUIPMENT AND OPERATOR HIRE FOR VARIOUS LOCATIONS	8333.60

Chq/EFT	Date	Name	Description	Amount
EFT34534	27/02/2014	SITA-MEDICOLLECT	COLLECTION AND INCINERATION OF SHARPS CONTAINER FROM JACK HEALEY CENTRE PODIATRY CLINIC	38.21
EFT34535	27/02/2014	CAI FENCES	FENCING SUPPLIES / REPAIRS	3547.50
EFT34536	27/02/2014	AABEL LINE MARKING	LINE MARKING FOR VARIOUS LOCATIONS	1002.60
EFT34537	27/02/2014	WA HINO SALES & SERVICE	PLANT / VEHICLE PARTS	486.12
EFT34538	27/02/2014	LOCAL GOVERNMENT MANAGERS AUSTRALIA (WA DIVISION)	REGISTRATION FOR STAFF TO ATTEND THE 2014 LGMA FINANCE PROFESSIONAL CONFERENCE	980.00
EFT34539	27/02/2014	FLEXIBLE DRIVE AGENCIES	PLANT / VEHICLE PARTS	71.50
EFT34540	27/02/2014	DIGITAL MAPPING SOLUTIONS	GIS CONSULTING SERVICES	8954.00
EFT34541	27/02/2014	ICON-SEPTECH	DRAINAGE SUPPLIES FOR VARIOUS LOCATIONS	3080.62
EFT34542	27/02/2014	C Y BOBCATS	PLANT EQUIPMENT AND OPERATOR HIRE FOR VARIOUS LOCATIONS	2288.00
EFT34543	27/02/2014	IAN JUSTIN WHITTEN	COUNCILLOR ALLOWANCE - 28/02/14 - 27/03/14	1965.39
EFT34544	27/02/2014	ORBIT HEALTH & FITNESS SOLUTIONS	GYM EQUIPMENT SUPPLIES	83.49
EFT34545	27/02/2014	THE FARM SHOP (WA) PTY LTD	GARDEN / RESERVE SUPPLIES	1570.18
EFT34546	27/02/2014	DARREN JOHN MCHUGH	FOOTPATH DEPOSIT REFUND AND CROSSOVER CONTRIBUTION	1385.00
EFT34547	27/02/2014	AMEREX FIRE (WA) (E FIRE AND SAFETY)	FIRE EQUIPMENT MAINTENANCE FOR VARIOUS LOCATIONS	55.00
EFT34548	27/02/2014	B & J CATALANO PTY LTD	ROAD MATERIALS FOR VARIOUS LOCATIONS	4950.89
EFT34549	27/02/2014	HILL TOP GROUP PTY	CONTRACTOR BUILDING MAINTENANCE FOR VARIOUS BUILDINGS	14741.29
EFT34550	27/02/2014	TALONS HIGH SECURITY FENCING	SUPPLY AND INSTALLATION OF FENCING / GATES AT VARIOUS LOCATIONS	20075.00
EFT34551	27/02/2014	INSTITUTE OF PUBLIC WORKS ENGINEERING AUSTRALIA WA	MEMBERSHIP SUBSCRIPTIONS FEES	275.00
EFT34552	27/02/2014	ANALYTICAL REFERENCE LABORATORIES	ASBESTOS SAMPLE	60.50

Chq/EFT	Date	Name	Description	Amount
EFT34553	27/02/2014	NEW GENERATION HOMES - TANGENT NOMINEES PTY LTD	FOOTPATH DEPOSIT REFUND	1000.00
EFT34554	27/02/2014	FREEDOM POOLS	FOOTPATH DEPOSIT REFUND	1000.00
EFT34555	27/02/2014	TRILOGY SERVICING PTY LTD	AIRCONDITIONING MAINTENANCE / REPAIRS FOR VARIOUS LOCATIONS	148.50
EFT34556	27/02/2014	GYMCARE	GYM EQUIPMENT REPAIRS / MAINTENANCE	166.65
EFT34557	27/02/2014	QUICK CORPORATE AUST PTY LTD	STATIONERY & OFFICE SUPPLIES	3957.64
EFT34558	27/02/2014	AUTO ONE KALAMUNDA	PLANT / VEHICLE PARTS	109.00
EFT34559	27/02/2014	BOOM LOGISTICS LTD	PLANT EQUIPMENT HIRE	1513.60
EFT34560	27/02/2014	SUSAN BILICH	COUNCILLOR ALLOWANCE - 28/02/14 - 27/03/14 - SHIRE PRESIDENT ALLOWANCE	7157.69
EFT34561	27/02/2014	MCDOWALL AFFLECK PTY LTD	ENGINEERING DETAIL VARIATION FOR KADS THEATRE PROJECT AND BOND REFUND FOR THE USE OF THE SEMINAR ROOM AT THE ZIG ZAG CULTURAL CENTRE	895.00
EFT34562	27/02/2014	COMMUNITY NEWSPAPER GROUP LTD	ADVERTISING FOR VARIOUS JOBS AND EVENTS	2269.46
EFT34563	27/02/2014	RICHARD H MARSHALL	FOOTPATH DEPOSIT REFUND AND CROSSOVER CONTRIBUTION	1385.00
EFT34564	27/02/2014	PERRY ENVIRONMENTAL CONTRACTING	WEED CONTROL AT VARIOUS LOCATIONS	2200.00
EFT34565	27/02/2014	BIG W (AR W1.C3.U.07)	LIBRARY SUPPLIES	313.90
EFT34566	27/02/2014	ROBERT & SHERYL TRETOWEN	FOOTPATH DEPOSIT REFUND	1000.00
EFT34567	27/02/2014	PRIME CORPORATE PSYCHOLOGY SERVICES P/L	EMPLOYEE ASSISTANCE PROGRAMME	2585.00
EFT34568	27/02/2014	LOCK, STOCK & FARRELL LOCKSMITH PTY LTD	PADLOCKS / KEYS SUPPLIES	896.35
EFT34569	27/02/2014	BGC RESIDENTIAL PTY LTD	FOOTPATH DEPOSIT REFUND	1000.00
EFT34570	27/02/2014	OPUS INTERNATIONAL CONSULTANTS (PCA) LIMITED	PROFESSIONAL SERVICES - RELOCATION OF SEWER	4712.13
EFT34571	27/02/2014	ATI-MIRAGE TRAINING SOLUTIONS	REGISTRATION FOR STAFF TO ATTEND - LEADING AND MANAGING YEARS	687.98
EFT34572	27/02/2014	REPEAT PLASTICS (WA)	PLANT / VEHICLE PARTS	1070.96

Chq/EFT	Date	Name	Description	Amount
EFT34573	27/02/2014	PERTH ENGINEERING & MAINTENANCE (WA) P/L (HIVE RESOURCE RECOVERY P/L)	GREEN WASTE REMOVAL / WASTE RECYCLING CHARGES	16387.27
EFT34574	27/02/2014	NGIS (AUSTRALIA) PTY LTD	REGISTRATION FOR STAFF TO ATTEND PYTHON FUNDAMENTALS	690.00
EFT34575	27/02/2014	CANNON HYGIENE AUSTRALIA PTY LTD	HYGIENE SERVICES FOR VARIOUS LOCATIONS	3079.06
EFT34576	27/02/2014	COCA-COLA AMATIL (AUST) PTY LTD	KIOSK SUPPLIES FOR HARTFIELD RECREATION CENTRE	832.73
EFT34577	27/02/2014	CONFECT - EXPRESS	KIOSK SUPPLIES FOR HARTFIELD RECREATION CENTRE	393.15
EFT34578	27/02/2014	G FORCE PRINTING	SUPPLY OF PRINTED STATIONERY STOCK	2545.18
EFT34579	27/02/2014	T-QUIP	PLANT / VEHICLE PARTS	896.85
EFT34580	27/02/2014	HOSECO	PLANT / VEHICLE PARTS	462.99
EFT34581	27/02/2014	SWAN TOWING SERVICE PTY LTD	TOWING SERVICES	330.00
EFT34582	27/02/2014	ACROMAT	GYM EQUIPMENT SUPPLIES	193.60
EFT34583	27/02/2014	HILLS GOURMET	CATERING SUPPLIES	130.00
EFT34584	27/02/2014	DIRECT TRADES SUPPLY PTY LTD	HARDWARE SUPPLIES	649.20
EFT34585	27/02/2014	PETER & CHERYL FOWLER	KEY BOND REFUND	50.00
EFT34586	27/02/2014	GREENWAY ENTERPRISES	GARDEN / RESERVE SUPPLIES	301.40
EFT34587	27/02/2014	RAMSAY POOLSCAPES	FOOTPATH DEPOSIT REFUND	1000.00
EFT34588	27/02/2014	MARGARET THOMAS	COUNCILLOR ALLOWANCE - 28/02/14 - 27/03/14	1965.39
EFT34589	27/02/2014	STEVEN & JANE BLOTT	PLANNING APPLICATION FEE REFUND	192.00
EFT34590	27/02/2014	WESTRAC PTY LTD	PLANT / VEHICLE PARTS	518.72
EFT34591	27/02/2014	WA NATURALLY PUBLICATIONS/DEPARTMENT OF ENVIRONMENT & CONSERVATION	MERCHANDISE SUPPLIES ZIG ZAG CULTURAL CENTRE	870.33
EFT34592	27/02/2014	CABLE LOCATES & CONSULTING	LOCATION SERVICE FOR 24 ANDERSON ROAD FORRESTFIELD	1070.30
EFT34593	27/02/2014	MAYDAY EARTHMOVING	PLANT AND EQUIPMENT HIRE	3907.55
EFT34594	27/02/2014	INSIGHT CCS PTY LTD	AFTER HOURS ANSWERING SERVICES	3515.05

Chq/EFT	Date	Name	Description	Amount
EFT34595	27/02/2014	PLANNING INSTITUTE AUSTRALIA	REGISTRATION FOR STAFF TO ATTEND THE PIA REGIONAL PLANNING SYMPOSIUM 2014	165.00
EFT34596	27/02/2014	MONUMENTAL SERVICES T/A A BALANCED VIEW LEISURE CONSULTANCY SERVICES	CONSULTANCY SERVICES FOR THE RAY OWEN RESERVE MASTER PLAN STUDY	14033.25
EFT34597	27/02/2014	NOREEN TOWNSEND	COUNCILLOR ALLOWANCE - 28/02/14 - 27/03/14	1965.39
EFT34598	27/02/2014	WOOLWORTHS LIMITED	GROCERIES FOR FUNCTIONS	678.00
EFT34599	27/02/2014	SNAP PRINTING - MIDLAND	PRINTING OF BUSINESS CARDS FOR VARIOUS STAFF	156.00
EFT34600	27/02/2014	FORRESTFIELD TENNIS CLUB (INC)	FORRESTFIELD TENNIS CLUB HIRE FEES FROM HARTFIELD PARK RECREATION CENTRE - 01/01/14 - 31/01/14	154.00
EFT34601	27/02/2014	FRANK LINDSEY	COUNCILLOR ALLOWANCE - 28/02/14 - 27/03/14	1965.39
EFT34602	27/02/2014	SIMON DI ROSSO	COUNCILLOR ALLOWANCE - 28/02/14 - 27/03/14	1965.39
EFT34603	27/02/2014	G.D.CHARLTON	PODIATRY SERVICES AT JACK HEALEY CENTRE	528.39
EFT34604	27/02/2014	SECURE TRAFFIC	TRAFFIC MANAGEMENT FOR VARIOUS LOCATIONS	30602.00
EFT34605	27/02/2014	CASTLEDINE & CASTLEDINE DESIGNERS	DESIGN AND PRODUCTION OF FINISHED ARTWORK FOR CORYMBIA FESTIVAL 2014 POSTER AND FLYER	1650.00
EFT34606	27/02/2014	JACKSON MCDONALD LAWYERS	LEGAL EXPENSES	6789.78
EFT34607	27/02/2014	GOLDY HOLDEN & SUZUKI - KOMET PTY LTD	PLANT / VEHICLE PARTS	1069.01
EFT34608	27/02/2014	SOUTHERN RIVER COLLEGE	HALL AND KEY BOND REFUND	700.00
EFT34609	27/02/2014	HUMES	DRAINAGE SUPPLIES FOR VARIOUS LOCATIONS	7093.75
EFT34610	27/02/2014	BOYA EQUIPMENT PTY LTD	PLANT / VEHICLE PARTS	365.29
EFT34611	27/02/2014	THE PERTH MINT AUSTRALIA	2014 AUSTRALIAN CITIZENSHIP COIN	1998.21
EFT34612	27/02/2014	AUSTRALIAN SUPERANNUATION	SUPERANNUATION CONTRIBUTIONS	1335.73
EFT34613	27/02/2014	ROAD SIGNS AUSTRALIA (ALLPACK SIGNS)	TRAFFIC PROTECTION PRODUCTS / SIGNAGE	1154.56
EFT34614	27/02/2014	JOHN & MICHELLE WATTS	FOOTPATH DEPOSIT REFUND	1000.00

Chq/EFT	Date	Name	Description	Amount
EFT34615	27/02/2014	ANDREW WADDELL	COUNCILLOR ALLOWANCE - 28/02/14 - 27/03/14	1965.39
EFT34616	27/02/2014	RESIDENTIAL BUILDING WA PTY LTD	FOOTPATH DEPOSIT REFUNDS	1700.00
EFT34617	27/02/2014	PETER TUCATS SUPERANNUATION FUND	SUPERANNUATION CONTRIBUTIONS	250.70
EFT34618	27/02/2014	DRAINFLOW SERVICES PTY LTD	CLEANING / MAINTAINING STORM WATER DRAINS	19023.40
EFT34619	27/02/2014	BINDALE SUPERANNUATION FUND	SUPERANNUATION CONTRIBUTIONS	65.50
EFT34620	27/02/2014	NEVERFAIL SPRINGWATER LTD (PETER ANDERTON CEN)	BOTTLED WATER SUPPLIES / MAINTENANCE	50.25
EFT34621	27/02/2014	WEST COAST PROFILERS PTY LTD	SUPPLY AND LAYING OF ASPHALT AND PROFILING AT VARIOUS LOCATIONS	59612.67
EFT34622	27/02/2014	NEVERFAIL SPRINGWATER LTD (ZZCC)	BOTTLED WATER SUPPLIES / MAINTENANCE	180.65
EFT34623	27/02/2014	DYLAN O'CONNOR	COUNCILLOR ALLOWANCE - 28/02/14 - 27/03/14	1965.39
EFT34624	27/02/2014	DARREN AND MICHELLE HOLT	REFUND OF RESIDENTIAL DEVELOPMENT APPLICATION FEE	832.00
EFT34625	27/02/2014	PH CONCRETE (WA) PTY LTD	FOOTPATH MAINTENANCE / REPAIRS FOR VARIOUS LOCATIONS	13732.97
EFT34626	27/02/2014	DESIREE KOVACEVICH	REIMBURSEMENT	214.11
EFT34627	27/02/2014	GUNDRY'S CARPET CHOICE	SUPPLY AND INSTALL FLOORING AT HARTFIELD PARK RECREATION CENTRE	1481.00
EFT34628	27/02/2014	STATE WIDE TURF SERVICES	TURF SUPPLIES / MAINTENANCE FOR VARIOUS LOCATIONS	6079.70
EFT34629	27/02/2014	DANTERR AGENCIES	PLANT / VEHICLE PARTS	2816.00
EFT34630	27/02/2014	JORGE'S CONTRACTING SERVICES	CLEANING SERVICES AT PETER ANDERTON CENTRE	2412.85
EFT34631	27/02/2014	BENCHMARK MAINTENANCE SERVICES	CONTRACTOR BUILDING MAINTENANCE VARIOUS BUILDINGS	412.50
EFT34632	27/02/2014	FLUTISSIMO	HALL, KEY AND GRAND PIANO BOND REFUND	560.00
EFT34633	27/02/2014	FONZ'S BOBCAT & TRUCK HIRE	PLANT EQUIPMENT AND OPERATOR HIRE FOR VARIOUS LOCATIONS	7109.76

Chq/EFT	Date	Name	Description	Amount
EFT34634	27/02/2014	BEAVER TREE SERVICES	TREE REMOVAL / PRUNING FOR VARIOUS LOCATIONS	11641.30
EFT34635	27/02/2014	DELL AUSTRALIA	ENTIRE IT INFRASTRUCTURE REPLACEMENT PROJECT	227451.90
EFT34636	27/02/2014	VISION SUPER PTY LTD	SUPERANNUATION CONTRIBUTIONS	758.66
EFT34637	27/02/2014	RYLAN PTY LTD	SUPPLY OF KERBING AT VARIOUS LOCATIONS	6880.50
EFT34638	27/02/2014	FUJI XEROX AUSTRALIA PTY LTD	PHOTOCOPYING CHARGES	9438.74
EFT34639	27/02/2014	PERTH PETROLEUM SERVICES	SUPPLY OF ASBESTOS DISPOSAL BAGS	380.59
EFT34640	27/02/2014	STARDATA PTY LTD	STARDATA MAINTENANCE AGREEMENT	1246.09
EFT34641	27/02/2014	JENNIFER DE YOUNG	VOLUNTEER TRANSPORT REIMBURSEMENT REFUND	198.00
EFT34642	27/02/2014	DRUM PRINT & PUBLICATIONS	PRINTING OF CITIZENSHIP PRESENTATION FOLDERS	1454.20
EFT34643	27/02/2014	LINDSAY GOODWIN	TECHNICIAN SERVICES FOR VARIOUS EVENTS	221.00
EFT34644	27/02/2014	ANGELA CANCI	PODIATRY SERVICES AT JACK HEALEY SERVICES	432.84
EFT34645	27/02/2014	SUPALUX PAINT CO PTY LTD	PAINTING MAINTENANCE WORKS AT VARIOUS LOCATIONS	19534.77
EFT34646	27/02/2014	CHRYSTAL DUFFY	FENCING REBATE CLAIM	3000.00
EFT34647	27/02/2014	VICTORIA PHYSIOTHERAPY GROUP	ERGONOMIC ASSESSMENT FOR VARIOUS STAFF MEMBERS	680.19
EFT34648	27/02/2014	UNIQUE WASTE MANAGEMENT SERVICES	HIRE OF TRUCK /OPERATOR TO TRANSPORT TO AND FROM WALLISTON TRANSFER STATION	4620.00
EFT34649	27/02/2014	SIGNS & LINES	SUPPLY OF FREESTANDING SIGNS FOR ZIG ZAG CULTURAL CENTRE	54.78
EFT34650	27/02/2014	ROBERT EMERY	COUNCILLOR ALLOWANCE - 28/02/14 - 27/03/14	1965.39
EFT34651	27/02/2014	EYEZON PTY LTD (WHAT'S ON)	MONTHLY ADVERT FOR PERTH HILLS SPREAD	449.00
EFT34652	27/02/2014	THE NATURAL RESONANCE STUDY GROUP	KEY BOND REFUND	50.00
EFT34653	27/02/2014	INSTRULABS PTY LTD	REPAIR TO SLM MICROPHONE EXTENSION CABLE	104.50

Chq/EFT	Date	Name	Description	Amount
EFT34654	27/02/2014	CITY OF STIRLING	MEALS ON WHEELS PROGRAM AND LONG SERVICE LEAVE ENTITLEMENT FOR PREVIOUS STAFF MEMBER	7182.45
EFT34655	27/02/2014	ORORA LTD	WASTE CARDBOARD RECYCLING CHARGES	275.00
EFT34656	27/02/2014	DYMOCKS MIDLAND GATE	LIBRARY SUPPLIES	601.96
EFT34657	27/02/2014	DAVRIC AUSTRALIA	ASSORTED MERCHANDISE ZIG ZAG CULTURAL CENTRE VISITOR CENTRE GIFT SHOP	425.63
EFT34658	27/02/2014	S PENNINGTON & C TAYLOR	FENCING REBATE CLAIM	2000.00
EFT34659	27/02/2014	HANDS-ON INFECTION CONTROL	TELEPHONE CONSULTANCY	45.00
EFT34660	27/02/2014	ELECTRICAL TEST TAG & INSPECTION SERVICES (ETTIS)	ANNUAL TAGGING AND TESTING OF ELECTRICAL APPLIANCES	1025.86
EFT34661	27/02/2014	WYCHERLY PTY LTD T/A TRANSWORLD LOGISTICS	FOOTPATH DEPOSIT REFUND	329.00
EFT34662	27/02/2014	MPJ (WA) PTY LTD	SUPERANNUATION CONTRIBUTIONS	442.52
EFT34663	27/02/2014	TOTAL GREEN RECYCLING	RECYCLING OF ELECTRICAL APPLIANCES / E WASTE	2611.38
EFT34664	27/02/2014	DMC CLEANING	CLEANING OF VARIOUS SHIRE BUILDINGS	50768.65
EFT34665	27/02/2014	CUROST MILK SUPPLY	MILK SUPPLY ADMINISTRATION BUILDING AND DEPOT	234.60
EFT34666	27/02/2014	ELAN ENERGY MANAGEMENT	WASTE - PICK UP OF TYRES	872.22
EFT34667	27/02/2014	MPK TREE SERVICES	TREE REMOVAL / BRANCH PRUNING AT VARIOUS LOCATIONS	3921.50
EFT34668	27/02/2014	MATHEW KOROSEC	BUILDING APPLICATION FEE REFUND	40.50
EFT34669	27/02/2014	SHERRIN RENTALS PTY LTD	WATER TRUCK HIRE FOR KALAMUNDA TENNIS CLUB CAR PARK	1051.87
EFT34670	27/02/2014	TURFWORKS WA PTY LTD	MOWING OF GRASS	13884.00
EFT34671	27/02/2014	MENNA GOWER	CROSSOVER CONTRIBUTION	385.00
EFT34672	27/02/2014	LASER CORPS	ENTERTAINMENT - CORYMBIA FESTIVAL 2014	1120.00
EFT34673	27/02/2014	YOUR LOCAL ATM (MOBILE)	HIRE OF ATM - CORYMBIA FESTIVAL 2014	650.00

Chq/EFT	Date	Name	Description	Amount
EFT34674	27/02/2014	MAJOR MITCHELL PRODUCTIONS	STAFF DEVELOPMENT	550.00
EFT34675	27/02/2014	STEPHEN & KELLY GURR	BUILDING APPLICATION FEE REFUND	90.00
EFT34676	27/02/2014	STAN THE TYRE MAN (STAN'S TYRE SERVICE WA)	PLANT / VEHICLE PARTS	1908.50
EFT34677	27/02/2014	DATAKOM SYSTEMS (WA) PTY LTD	ENTIRE IT INFRASTRUCTURE REPLACEMENT PROJECT	51100.50
EFT34678	27/02/2014	CHRIS KERSHAW PHOTOGRAPHY	UN-ARCHIVE AND SUPPLY IMAGES ON USB	110.00
EFT34679	27/02/2014	WOBBLYJULES INVESTMENTS FUND	SUPERANNUATION CONTRIBUTIONS	201.00
EFT34680	27/02/2014	ALLEASING PTY LTD	LEASING CONTRACT FOR VARIOUS LEASES	57874.63
EFT34681	27/02/2014	ENVIRO SWEEP	FOOTPATH / CARPARK SWEEPING SERVICES AT VARIOUS LOCATIONS	17870.88
EFT34682	27/02/2014	PERTH WASTE PTY LTD	WEEKLY COLLECTION OF WASTE SERVICES	248107.80
EFT34683	27/02/2014	FORT KNOX RECORDS MANAGEMENT	OFFSITE STORAGE OF RECORDS	292.71
EFT34684	27/02/2014	ASHDENE MANUFACTURING PTY LTD	ASSORTED MERCHANDISE ITEMS FOR THE ZZCC VISITOR CENTRE GIFT SHOP	736.97
EFT34685	27/02/2014	AUSTRALIAN CATHOLIC SUPERANNUATION & RETIREMENT FUND (ACSRF)	SUPERANNUATION CONTRIBUTIONS	234.60
EFT34686	27/02/2014	SHERWOOD FLOORING PTY LTD	SANDING OF STAGE AREAS KPAC THEATRE	1017.50
EFT34687	27/02/2014	ESSENTIAL ENVIRONMENTAL	OFFSET PLAN FOR THE HARTFIELD PARK RESERVE	2794.00
EFT34688	27/02/2014	QUENDA DESIGNS	INTERNATIONAL DAY OF PEOPLE WITH DISABILITY - CONNECTING COMMUNITIES WITH KALAMUNDA EXHIBITION ARTWORK	3415.50
EFT34689	27/02/2014	SPRAYLINE SPRAYING EQUIPMENT	SPRAYING EQUIPMENT	450.00
EFT34690	27/02/2014	BLACK BOX CONTROL PTY LTD	MONTHLY FEE - FEB 2014	660.00
EFT34691	27/02/2014	REDLINE (WA) PTY LTD	CONSTRUCTION OF SEWER MAIN	144192.13
EFT34692	27/02/2014	WESTERN TECHNICAL SERVICES PTY LTD	DAIKEN DUCTED AIR CONDITIONER SYSTEM AT VARIOUS LOCATIONS	24436.50
EFT34693	27/02/2014	KALAMUNDA PATISSERIE	CATERING	15.30

Chq/EFT	Date	Name	Description	Amount
EFT34694	27/02/2014	RESONANZ CONSULTING PTY LTD	300 RUBBISH BIN STICKERS 'PLEASE SLOW DOWN, CONSIDER OUR KIDS'	815.10
EFT34695	27/02/2014	Z-REST FURNITURE	12 STANDARD CARPET FINISH FOOT RESTS	2062.10
EFT34696	27/02/2014	REFACE INDUSTRIES PTY LTD	LIBRARY SUPPLIES	3102.00
EFT34697	27/02/2014	UNIQUIP ELECTRICAL WHOLESALE	SUPPLY AND INSTALLATION OF LIGHTS AT RAY OWEN	39509.80
EFT34698	27/02/2014	THE SULLIVAN SUPER FUND	SUPERANNUATION CONTRIBUTIONS	651.29
EFT34699	27/02/2014	TLS PRODUCTIONS PTY LTD	MOVING, CLEANING AND TESTING OF THE AV EQUIPMENT	1871.58
EFT34700	27/02/2014	EVERGREEN SYNTHETIC GRASS	SYNTHETIC TURF SUPPLIES	8102.00
EFT34701	27/02/2014	MOTTERAM MOTORS	SERVICE AND REPAIR CYLINDER HEAD FOR SHIRE VEHICLE	1000.00
EFT34702	27/02/2014	TRI UNDERGROUND AUSTRALIA PTY LTD	DRAINAGE SUPPLIES FOR VARIOUS LOCATIONS	1125.08
EFT34703	27/02/2014	DEVLYN CONSTRUCTIONS PTY LTD	PLANNING APPLICATION FEE REFUND	2342.50
EFT34704	27/02/2014	QIS PACKAGING	SUPPLY OF PAPER CARRY BAGS	582.45
EFT34705	27/02/2014	PAUL AND KAYE MORO	ASSORTED MERCHANDISE ITEMS	470.60
EFT34706	27/02/2014	FRIDGAIK INDUSTRIES PTY LTD	REPAIR OF FRIDGE AT PETER ANDERTON CENTRE	359.43
EFT34707	27/02/2014	VERSER TECHNOLOGY LIFECYCLES PTY LTD	REMOVAL OF DELL COMPUTERS FOR LEASE RETURN	1145.43
EFT34708	27/02/2014	DAYTONE PRINTING PTY LTD	PRINTING OF LIBRARY MEMBERSHIP CONDITIONS	598.40
EFT34709	27/02/2014	BAY POOLS & SPAS	FOOTPATH DEPOSIT REFUND	1000.00
EFT34710	27/02/2014	QUESTAMON TRAINING	REGISTRATION OF STAFF TO ATTEND VARIOUS COURSES	2200.00
EFT34711	27/02/2014	WEST AUSTRALIAN JUNIOR MOTOCROSS CLUB	KIDSPORT FUNDING FOR VARIOUS PLAYERS	380.00
EFT34712	27/02/2014	ULRICH DAVID ANTHONY	REIMBURSEMENT	225.40
EFT34713	27/02/2014	ANTHONY BARLOW	SUBDIVISION BOND	1050.00
EFT34714	27/02/2014	KALAMUNDA LIONS CLUB ART AWARDS 2014	BOND REFUND GALLERY ZIG ZAG CULTURAL CENTRE	500.00

Chq/EFT	Date	Name	Description	Amount
EFT34715	27/02/2014	ART KIDS ON THE HILL	BOND REFUND GALLERY ZIG ZAG CULTURAL CENTRE	500.00
EFT34716	27/02/2014	BUILDING CONTRACTOR PTY LTD	FOOTPATH DEPOSIT REFUND	1000.00
EFT34717	27/02/2014	JENNI BLOWERS	HALL, KEY BOND AND HIRE FEES REFUND	1271.25
EFT34718	27/02/2014	PERTH HASH HOUSE HARRIERS	KEY BOND REFUND	50.00
EFT34719	27/02/2014	IAN BOULTON	KEY BOND REFUND	50.00
67454	29/01/2014	HOSPITAL BENEFIT FUND OF WA	PAYROLL DEDUCTIONS	363.45
67455	29/01/2014	AUSTRALIAN SERVICES UNION	PAYROLL DEDUCTIONS	171.08
67456	29/01/2014	MUNICIPAL EMPLOYEES UNION	PAYROLL DEDUCTIONS	523.80
67457	29/01/2014	TELSTRA CORPORATION	TELEPHONE EXPENSES	1137.75
67458	29/01/2014	WATER CORPORATION	WATER USE AND SERVICE CHARGE FEES	6160.65
67459	29/01/2014	BCITF	LEVY FEE	104.60
67460	29/01/2014	SYNERGY	POWER CHARGES	5154.40
67461	29/01/2014	ALINTA ENERGY	GAS CHARGES	84.35
67462	29/01/2014	RAC	ROADSIDE ASSISTANT	267.00
67463	29/01/2014	CASH - KALAMUNDA LIBRARY	PETTY CASH REIMBURSEMENT	56.75
67464	29/01/2014	CASH - FORRESTFIELD LIBRARY	PETTY CASH REIMBURSEMENT	143.45
67465	29/01/2014	CASH - HARTFIELD PARK	PETTY CASH REIMBURSEMENT	167.00
67466	29/01/2014	WESTSCHEME SUPERANNUATION	SUPERANNUATION CONTRIBUTIONS	673.84
67467	29/01/2014	REST SUPERANNUATION	SUPERANNUATION CONTRIBUTIONS	1209.37
67468	29/01/2014	AMP RETIREMENT SAVINGS ACCOUNT	SUPERANNUATION CONTRIBUTIONS	233.14
67469	29/01/2014	COGNET NOMINEES PTY LTD ACF MAP SUPER FUND	SUPERANNUATION CONTRIBUTIONS	95.98
67470	29/01/2014	COLONIAL 1ST STATE SUPERANNUATION	SUPERANNUATION CONTRIBUTIONS	896.08
67471	29/01/2014	HESTA SUPER FUND	SUPERANNUATION CONTRIBUTIONS	700.95
67472	29/01/2014	AMPLIFE LIMITED	SUPERANNUATION CONTRIBUTIONS	112.84
67473	29/01/2014	CASH - MEALS ON WHEELS	PETTY CASH REIMBURSEMENT	478.15
67474	29/01/2014	CASH - KALAMUNDA HACC	PETTY CASH REIMBURSEMENT	683.75

Chq/EFT	Date	Name	Description	Amount
67475	29/01/2014	ANZ SUPER ADVANTAGE	SUPERANNUATION CONTRIBUTIONS	195.76
67476	29/01/2014	AMP SUPER LEADER	SUPERANNUATION CONTRIBUTIONS	127.71
67477	29/01/2014	ING INTEGRA PERSONAL SUPER	SUPERANNUATION CONTRIBUTIONS	106.43
67478	29/01/2014	HOSTPLUS PTY LTD	SUPERANNUATION CONTRIBUTIONS	70.70
67479	29/01/2014	AUSTRALIAN RETIREMENT FUND - ARF ADMINISTRATION	SUPERANNUATION CONTRIBUTIONS	119.84
67480	29/01/2014	COMMONWEALTH SUPERSELECT	SUPERANNUATION CONTRIBUTIONS	178.64
67481	29/01/2014	CHRISTOPHER NATHAN LUSH	RATES REFUND	3.29
67482	29/01/2014	CASH - ZIG ZAG CULTURAL CENTRE	PETTY CASH REIMBURSEMENT	105.00
67483	29/01/2014	MACQUARIE WRAP	SUPERANNUATION CONTRIBUTIONS	618.73
67484	29/01/2014	WATER CORPORATION SUPERANNUATION PLAN	SUPERANNUATION CONTRIBUTIONS	216.40
67485	29/01/2014	TWU SUPERANNUATION FUND	SUPERANNUATION CONTRIBUTIONS	190.00
67486	29/01/2014	ONEPATH MASTERFUND	SUPERANNUATION CONTRIBUTIONS	182.44
67487	29/01/2014	ULTIMATE SUPERANNUATION SERVICE	SUPERANNUATION CONTRIBUTIONS	200.00
67488	29/01/2014	KINETIC SUPERANNUATION LTD	SUPERANNUATION CONTRIBUTIONS	182.60
67489	12/02/2014	HOSPITAL BENEFIT FUND OF WA	PAYROLL DEDUCTIONS	363.45
67490	12/02/2014	AUSTRALIAN SERVICES UNION	PAYROLL DEDUCTIONS	195.52
67491	12/02/2014	MUNICIPAL EMPLOYEES UNION	PAYROLL DEDUCTIONS	543.20
67492	12/02/2014	TELSTRA CORPORATION	TELEPHONE EXPENSES	18782.58
67493	12/02/2014	WATER CORPORATION	WATER USE AND SERVICE CHARGE FEES	5959.36
67494	12/02/2014	BCITF	LEVY FEE - JANUARY 2014	22764.66
67495	12/02/2014	SYNERGY	POWER CHARGES	154122.05
67496	12/02/2014	ALINTA ENERGY	GAS CHARGES	1855.90
67497	12/02/2014	DIRECTOR OF LICENSING SERVICES	NUMBER PLATES	200.00
67498	12/02/2014	BUILDING COMMISSION	BUILDING LEVY - JANUARY 2014	12394.40
67499	12/02/2014	CASH - ADMIN	PETTY CASH REIMBURSEMENT	330.65
67500	12/02/2014	CASH - KALAMUNDA LIBRARY	PETTY CASH REIMBURSEMENT	78.35
67501	12/02/2014	CASH - FORRESTFIELD LIBRARY	PETTY CASH REIMBURSEMENT	149.59

Chq/EFT	Date	Name	Description	Amount
67502	12/02/2014	WESTSCHEME SUPERANNUATION	SUPERANNUATION CONTRIBUTIONS	619.43
67503	12/02/2014	REST SUPERANNUATION	SUPERANNUATION CONTRIBUTIONS	1056.87
67504	12/02/2014	AMP RETIREMENT SAVINGS ACCOUNT	SUPERANNUATION CONTRIBUTIONS	258.49
67505	12/02/2014	COGNET NOMINEES PTY LTD ACF MAP SUPER FUND	SUPERANNUATION CONTRIBUTIONS	94.03
67506	12/02/2014	COLONIAL 1ST STATE SUPERANNUATION	SUPERANNUATION CONTRIBUTIONS	954.01
67507	12/02/2014	HESTA SUPER FUND	SUPERANNUATION CONTRIBUTIONS	666.30
67508	12/02/2014	AMPLIFE LIMITED	SUPERANNUATION CONTRIBUTIONS	94.03
67509	12/02/2014	CASH - MEALS ON WHEELS	PETTY CASH REIMBURSEMENT	517.70
67510	12/02/2014	CASH - KALAMUNDA HACC	PETTY CASH REIMBURSEMENT	113.60
67511	12/02/2014	ANZ SUPER ADVANTAGE	SUPERANNUATION CONTRIBUTIONS	195.76
67512	12/02/2014	AMP SUPER LEADER	SUPERANNUATION CONTRIBUTIONS	88.18
67513	12/02/2014	ING INTEGRA PERSONAL SUPER	SUPERANNUATION CONTRIBUTIONS	90.46
67514	12/02/2014	AUSTRALIAN RETIREMENT FUND - ARF ADMINISTRATION	SUPERANNUATION CONTRIBUTIONS	121.78
67515	12/02/2014	COMMONWEALTH SUPERSELECT	SUPERANNUATION CONTRIBUTIONS	175.60
67516	12/02/2014	CASH - ZIG ZAG CULTURAL CENTRE	PETTY CASH REIMBURSEMENT	30.40
67517	12/02/2014	CASH - KPAC	PETTY CASH REIMBURSEMENT	92.74
67518	12/02/2014	MACQUARIE WRAP	SUPERANNUATION CONTRIBUTIONS	618.73
67519	12/02/2014	WATER CORPORATION SUPERANNUATION PLAN	SUPERANNUATION CONTRIBUTIONS	216.40
67520	12/02/2014	TWU SUPERANNUATION FUND	SUPERANNUATION CONTRIBUTIONS	190.00
67521	12/02/2014	ONEPATH MASTERFUND	SUPERANNUATION CONTRIBUTIONS	182.44
67522	12/02/2014	ULTIMATE SUPERANNUATION SERVICE	SUPERANNUATION CONTRIBUTIONS	250.00
67523	12/02/2014	KINETIC SUPERANNUATION LTD	SUPERANNUATION CONTRIBUTIONS	182.60
67524	26/02/2014	HOSPITAL BENEFIT FUND OF WA	PAYROLL DEDUCTIONS	363.45
67525	26/02/2014	AUSTRALIAN SERVICES UNION	PAYROLL DEDUCTIONS	195.52
67526	26/02/2014	MUNICIPAL EMPLOYEES UNION	PAYROLL DEDUCTIONS	562.60
67527	26/02/2014	TELSTRA CORPORATION	TELEPHONE EXPENSES	18970.37

Chq/EFT	Date	Name	Description	Amount
67528	26/02/2014	WATER CORPORATION	WATER USE AND SERVICE CHARGE FEES	26630.69
67529	26/02/2014	SYNERGY	POWER CHARGES	33802.75
67530	26/02/2014	ALINTA ENERGY	GAS CHARGES	74.00
67531	26/02/2014	DIRECTOR OF LICENSING SERVICES	NUMBER PLATES	200.00
67532	26/02/2014	CASH - ADMIN	PETTY CASH REIMBURSEMENT	461.40
67533	26/02/2014	CASH - KALAMUNDA LIBRARY	PETTY CASH REIMBURSEMENT	243.50
67534	26/02/2014	CASH - FORRESTFIELD LIBRARY	PETTY CASH REIMBURSEMENT	132.38
67535	26/02/2014	CASH - HARTFIELD PARK	PETTY CASH REIMBURSEMENT	128.45
67536	26/02/2014	WESTSCHEME SUPERANNUATION	SUPERANNUATION CONTRIBUTIONS	652.68
67537	26/02/2014	REST SUPERANNUATION	SUPERANNUATION CONTRIBUTIONS	1285.52
67538	26/02/2014	AMP RETIREMENT SAVINGS ACCOUNT	SUPERANNUATION CONTRIBUTIONS	266.68
67539	26/02/2014	COGNET NOMINEES PTY LTD ACF MAP SUPER FUND	SUPERANNUATION CONTRIBUTIONS	86.90
67540	26/02/2014	COLONIAL 1ST STATE SUPERANNUATION	SUPERANNUATION CONTRIBUTIONS	860.85
67541	26/02/2014	HESTA SUPER FUND	SUPERANNUATION CONTRIBUTIONS	799.15
67542	26/02/2014	AMPLIFE LIMITED	SUPERANNUATION CONTRIBUTIONS	84.95
67543	26/02/2014	CASH - KALAMUNDA HACC	PETTY CASH REIMBURSEMENT	244.95
67544	26/02/2014	ANZ SUPER ADVANTAGE	SUPERANNUATION CONTRIBUTIONS	195.76
67545	26/02/2014	AMP SUPER LEADER	SUPERANNUATION CONTRIBUTIONS	107.95
67546	26/02/2014	ING INTEGRA PERSONAL SUPER	SUPERANNUATION CONTRIBUTIONS	88.18
67547	26/02/2014	AUSTRALIAN RETIREMENT FUND - ARF ADMINISTRATION	SUPERANNUATION CONTRIBUTIONS	126.73
67548	26/02/2014	COMMONWEALTH SUPERSELECT	SUPERANNUATION CONTRIBUTIONS	136.07
67549	26/02/2014	SCOUTS AUSTRALIA KALAMUNDA DISTRICT	KEY BOND REFUND	50.00
67550	26/02/2014	MACQUARIE WRAP	SUPERANNUATION CONTRIBUTIONS	618.73
67551	26/02/2014	WATER CORPORATION SUPERANNUATION PLAN	SUPERANNUATION CONTRIBUTIONS	216.40
67552	26/02/2014	TWU SUPERANNUATION FUND	SUPERANNUATION CONTRIBUTIONS	189.99
67553	26/02/2014	ONEPATH MASTERFUND	SUPERANNUATION CONTRIBUTIONS	182.44

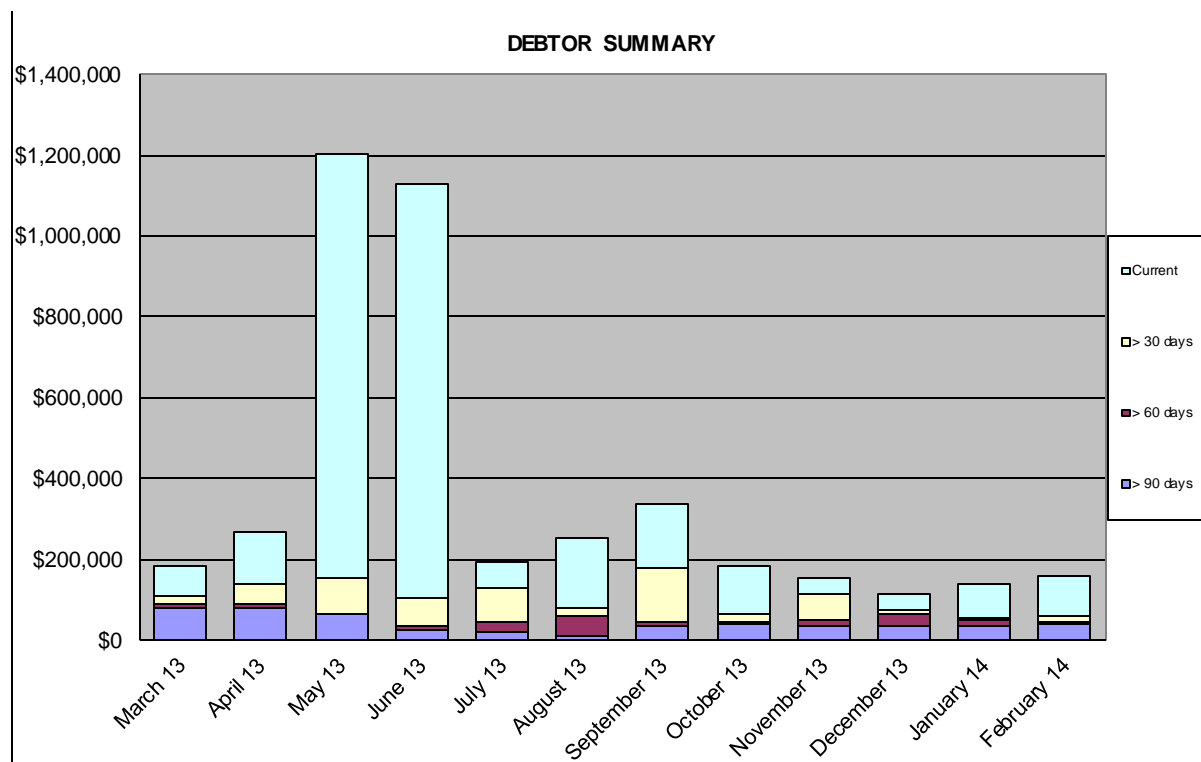
Chq/EFT	Date	Name	Description	Amount
67554	26/02/2014	ULTIMATE SUPERANNUATION SERVICE	SUPERANNUATION CONTRIBUTIONS	225.00
67555	26/02/2014	KINETIC SUPERANNUATION LTD	SUPERANNUATION CONTRIBUTIONS	182.61
67556	27/02/2014	CASH - MEALS ON WHEELS	PETTY CASH REIMBURSEMENT	513.00
				4390154.61

Attachment 2

SHIRE OF KALAMUNDA
 SUMMARY OF DEBTORS
 FOR THE PERIOD ENDED 28th February 2014

Sundry Debtors Trial Balance - Summary Aged Listing

	> 90 days	> 60 days	> 30 days	Current	Total
March 13	\$81,111	\$9,196	\$20,088	\$75,939	\$186,335
April 13	\$80,450	\$8,181	\$53,087	\$128,415	\$270,133
May 13	\$63,398	\$2,436	\$88,471	\$1,047,105	\$1,201,410
June 13	\$27,854	\$8,275	\$66,371	\$1,026,898	\$1,129,399
July 13	\$22,971	\$24,180	\$84,188	\$63,956	\$195,295
August 13	\$12,386	\$48,665	\$21,521	\$172,620	\$255,193
September 13	\$33,547	\$13,845	\$132,820	\$155,054	\$335,266
October 13	\$41,669	\$3,852	\$22,138	\$115,581	\$183,240
November 13	\$35,402	\$14,890	\$63,761	\$41,601	\$155,654
December 13	\$36,884	\$28,991	\$11,194	\$36,916	\$113,986
January 14	\$35,901	\$15,076	\$6,820	\$83,752	\$141,548
February 14	\$39,263	\$5,669	\$17,441	\$95,509	\$157,881



**SHIRE OF KALAMUNDA
 SUMMARY OF DEBTORS
 FOR THE PERIOD ENDED 28th February 2014**

AMOUNT	DEBTOR	DETAILS	STATUS
>90 days			
\$4,559.57	Foothills Netball Association	Loan 216 / Operational Expenses	Club no longer operational. Shire has taken over operations from December 2013 onwards.
\$5,923.97	Forrestfield United Soccer Club	Loan 214	Club in contact with the Shire regarding Loan arrangements.
\$24,000.00	Lesmurdie Tennis Club Inc *	Contribution to Extension	The Shire is monitoring - 2 instalment payments made.
\$3,859.68	Western Power *	Private Works - repair to damaged storm water pipes	Western Power has advised they are not liable for the damage - Shire Operations is currently looking into the matter.
\$919.51	90+ Days Debts consisting of amounts under \$1,000.00.		Debtors to be contacted by telephone to advise debt recovery action pending / final notices issued or debt with D&B.
\$39,262.73	Total Debts 90+ Days		
>60 days			
\$2,791.07	Western Power	Private Works - repair to damaged storm water pipes	Western Power Accounts Payable are currently behind in processing invoices - to monitor.
\$2,453.48	Zig Zag Café Kalamunda	Lease / Operational Expenses	Debtor committed to pay fortnightly instalments.
\$424.62	60+ Days Debts consisting of amounts under \$1,000.00.		All debtors to be contacted by telephone / email - copy invoices mailed as required.
\$5,669.17	Total Debts 60+ Days		

>30 days			
\$2,461.01	Department of Fire & Emergency	Expenses - Community Fire Officer	Reminder invoice sent.
\$2,050.85	Early Bird Learning	Hall Hire	Reminder invoice sent.
\$1,112.94	Fit 2 Cheer	Lease / Operational Expenses	Reminder invoice sent.
\$1,223.50	Hills District Callisthenics	Hall Hire	Reminder invoice sent.
\$1,044.00	Jollettes Gymnastics	Hall Hire	Reminder invoice sent.
\$2,034.54	Shire of Corrigin	Building Services	Statement sent.
\$1,835.63	Zig Zag Café Kalamunda	Lease / Operational Expenses	Debtor committed to pay fortnightly installments.
\$5,678.48	30+ Days Debts consisting of amounts under \$1,000.00.		Reminder invoices to be sent.
\$17,440.95	Total Debts 30+ Days		
< 30 days			
\$104,463.33	Total of Current Debts		
\$8,954.83	Total of Accounts in Credit		
\$157,881.35	Total - Debtors Trial Balance		

* Denotes currently in negotiation of invoice amount and details

^ Denotes payment arrangement in place

Attachment 3

SHIRE OF KALAMUNDA
SUMMARY OF CREDITORS
FOR THE PERIOD ENDED 28 FEBRUARY 2014

Sundry Creditors Trial Balance - Summary Aged Listing

Month End	> 90 days	> 60 days	> 30 days	Current	Total
31/07/2012	\$1,129	\$2,418	\$829,279	\$1,240,322	\$2,073,148
31/08/2012	\$5,953	\$434	\$10,731	\$1,784,665	\$1,801,783
30/09/2012	\$13,713	\$1,630	\$6,362	\$1,036,804	\$1,058,509
31/10/2012	\$923	\$91,135	\$40,634	\$1,275,858	\$1,408,551
30/11/2012	\$8,738	\$4,059	\$10,289	\$1,387,687	\$1,410,773
31/12/2012	\$8,580	-\$454	\$53,987	\$544,597	\$606,710
31/01/2013	\$2,275	-\$4	\$10,756	\$380,050	\$393,077
28/02/2013	-\$191	-\$154	\$8,042	\$500,380	\$508,078
31/03/2013	-\$344	\$6,566	\$5,034	\$163,125	\$174,380
30/04/2013	\$7,253	\$39,057	\$10,266	\$690,585	\$747,161
31/05/2013	\$1,225	\$942	\$14,952	\$1,077,590	\$1,094,709
30/06/2013	\$9,393	\$13,544	\$364,665	\$1,914,271	\$2,301,873
31/07/2013	\$3,168	\$30,928	\$7,860	\$704,407	\$746,364
31/08/2013	\$1,618	\$6,095	\$46,102	\$542,740	\$596,555
30/09/2013	\$3,630	\$53,734	\$7,014	\$383,394	\$447,773
31/10/2013	\$12,120	\$1,454	\$107,830	\$1,566,553	\$1,687,957
30/11/2013	\$12,873	\$19,461	\$188,950	\$1,734,521	\$1,955,805
31/12/2013	\$1,090	\$8,183	\$10,820	\$781,525	\$801,618
31/01/2014	\$38,061	-\$3,986	\$64,483	\$863,813	\$962,372
28/02/2014					

Comment

- > 90 days Original Invoices for Turfworks WA Pty Ltd and Beaver Tree Services not received in Accounts to process
- > 60 days Original Invoices for Davley Building P/L, Beaver Tree Services and a Credit for Datacom not received in Accounts to process.
- > 30 days These invoices are paid on the third fortnightly payment run.

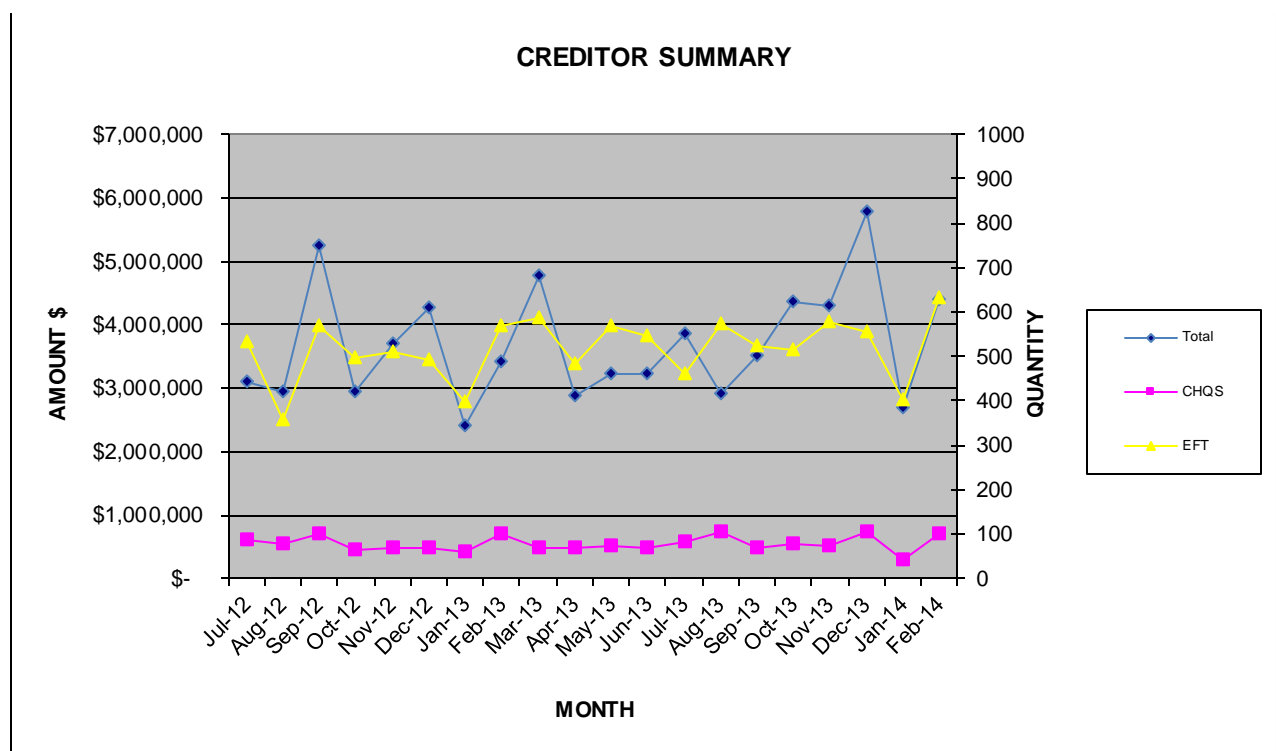
Creditor Payments made

Month	Amount	\$	Quantity		
			Cheques	EFTs	Total
Jul-12	\$	3,085,557	88	531	619
Aug-12	\$	2,928,637	77	356	433
Sep-12	\$	5,229,543	101	569	670
Oct-12	\$	2,931,587	66	497	563
Nov-12	\$	3,692,467	70	512	582
Dec-12	\$	4,255,844	68	493	561
Jan-13	\$	2,396,387	59	397	456
Feb-13	\$	3,426,479	100	568	668
Mar-13	\$	4,766,915	69	588	588
Apr-13	\$	2,869,343	70	482	552
May-13	\$	3,222,475	73	568	641
Jun-13	\$	3,221,716	68	544	612
Jul-13	\$	3,861,531	83	462	545
Aug-13	\$	2,924,590	107	573	680
Sep-13	\$	3,520,038	69	523	592
Oct-13	\$	4,358,209	79	513	592
Nov-13	\$	4,306,884	75	577	652
Dec-13	\$	5,791,804	106	556	662
Jan-14	\$	2,690,559	40	404	444
Feb-14	\$	4,390,155	102	631	733

*Excludes net staff payroll

*Creditors on 30 day terms are paid on the 28th of the month following.

*Local suppliers are paid on 14 day terms.



-
7. Significant progress has been made in raising Interim rates with \$159,910 having been raised to February 2014. Processing of the interim rates will be a focus in the remaining months to ensure all potential revenue is recognised.

DETAILS

Debt Recovery

8. All 22 outstanding debts from 2012/13 that remain with Dun & Bradstreet (D&B) have had Judgement entered against them; 8 have been served with a "Property Seizure & Sales Order" (PSSO). The balances are still to have PSSO issued once located.
9. As indicated, there are 62 ratepayers who have not responded to the D&B. The administration have now requested D&B to proceed to Judgement on the 62 properties where no response or payment has been received.
10. Outstanding debts of less than \$500 are deemed as too small to warrant legal action and will be followed up in house. A rates debtor report will be brought to Council to approve those that have proceeded to Judgment and have still not satisfied the claim to proceed towards issuance of a Land Warrant.

STATUTORY AND LEGAL CONSIDERATIONS

11. The Shire collects its rates debts in accordance with the *Local Government Act (1995) Division 6 – Rates and Service Charges under the requirements of subdivision 5 – Recovery of unpaid rates and service charges.*

POLICY CONSIDERATIONS

12. Nil.

COMMUNITY ENGAGEMENT REQUIREMENTS

13. Nil.

FINANCIAL CONSIDERATIONS

14. The raising of rates in July has allowed the Shires operations to commence without delays and allows the Shire to optimise interest earnings.

STRATEGIC COMMUNITY PLAN

Strategic Planning Alignment

15. *Kalamunda Advancing: Strategic Community Plan to 2023*

OBJECTIVE 6.8 - To ensure financial sustainability through the implementation of effective financial management, systems and plans.

Strategy 6.8.4 Provide effective financial services to support the Shire's operations and to meet sustainability planning, reporting and accountability requirements.

SUSTAINABILITY

Social Implications

16. Debt collection can have implications upon those ratepayers facing hardship and the Shire must ensure equity in its debt collection processes.

Economic Implications

17. Effective collection of all outstanding debtors leads to enhanced financial sustainability for the Shire.

Environmental Implications

18. Nil.

RISK MANAGEMENT CONSIDERATIONS

19.

Risk	Likelihood	Consequence	Rating	Action/Strategy
The Shire is exposed to the potential risk of the ratepayer failing to make payments which it is obligated to do. This will result in the disruption of cash flows and increased collection costs.	Low	Low	Low	Ensure debt collections is rigorously managed.

OFFICER COMMENT

20. Nil.

Voting Requirements: Simple Majority

OFFICER RECOMMENDATION (C&C 10/2014)

That Council:

1. Receives the rates debtors report for the period ended 28 February 2014 (Attachment 1).

Moved:

Seconded:

Vote:

Attachment 1

SHIRE OF KALAMUNDA
SUMMARY OF OUTSTANDING RATES
FOR THE PERIOD ENDED 28 FEBRUARY 2014

Rates Outstanding Debtors

	3rd Previous Year + Outstanding	2nd Previous Year Outstanding	Previous Year Outstanding	Current Outstanding	Total Outstanding	Previous Year Total Outstanding
31/07/2013	\$315,936	\$94,910	\$295,163	\$22,754,586	\$23,460,595	\$779,089
31/08/2013	\$313,756	\$91,341	\$223,784	\$14,084,885	\$14,713,766	\$22,398,443
30/09/2013	\$310,039	\$87,180	\$183,695	\$12,571,976	\$13,152,890	\$13,496,792
30/10/2013	\$309,076	\$83,444	\$165,097	\$10,113,059	\$10,670,676	\$12,802,377
30/11/2013	\$305,152	\$81,878	\$142,520	\$8,882,464	\$9,412,015	\$9,569,596
31/12/2013	\$302,318	\$79,071	\$131,332	\$5,186,504	\$5,699,225	\$8,630,908
31/01/2014	\$299,941	\$76,726	\$123,954	\$4,141,098	\$4,641,719	\$5,563,543
28/02/2014	\$298,729	\$76,379	\$118,713	\$1,925,318	\$2,419,139	\$4,523,618
31/03/2014					\$0	
30/04/2014					\$0	
31/05/2014					\$0	
30/06/2014					\$0	

Rate Levied 2013/2014

Interim 2013/2014

Back Rates

\$28,416,654

\$159,910

\$8,065

Total Levies To Date for 2013/14

\$28,584,629

Total Rates Outstanding

2,419,139

Current Deferred Rates Amt (from Rate Reports)

\$ 463,579

Total Rates amount to be collected not including deferred

\$1,955,560

% of Rates Outstanding :

6.95%

Comment

The 2013/2014 Instalment Dates are as follows:

	4xinstalments	2xinstalments
1st Instalment	12/08/2013	12/08/2013
2nd Instalment	14/10/2013	16/12/2013
3rd Instalment	16/12/2013	
4th Instalment	10/02/2014	

Declaration of financial / conflict of interests to be recorded prior to dealing with each item.

11. Household Waste Collection Service and Application for Funding under the Better Bins Program

Previous Items	Nil.
Responsible Officer	Director Infrastructure Operations
Service Area	Infrastructure Operations
File Reference	OR-IGR-005
Applicant	N/A
Owner	N/A
Attachment 1	Better Bins Kerbside Collection Guidelines
Attachment 2	Better Bins Funding Guide
Attachment 3	Waste Strategy 2013-2022
Attachment 4	FAQs Including Business Case for Third Bin for Green Waste

PURPOSE

1. To provide Council with an opportunity to review and consider the proposed changes to the household collection service required to implement a three bin system comprising:
 - General waste
 - Recycling
 - Green organics
2. To endorse the submission of an Expression of Interest (EoI) to the Waste Authority for funding under the Better Bins Program for the implementation of a third household bin for green waste.
3. To recommend to Council other changes to provide flexibility and equity, noting that several demographic groups may seek alternative combinations of bins sizes to suit their needs and should be rewarded for seeking smaller bins, or make higher payments to reflect increased volumes available by choosing larger bins.

BACKGROUND

4. In December 2012, the Shire sought quotes for various elements of the proposed waste strategy including the purchase of bins for a three bin system and the provision of a green organics collection service.
5. In March 2013, Council endorsed the *Waste Strategy 2013-2022* which included:
 - Strategy 1 Improve Collections – introduction of a third waste bin for green waste.
6. In May 2013, a waste bin audit was undertaken and this identified that the average utilisation of bin capacity is 44% (106L per week). These results were consistent with the previous audit.

-
7. The waste bin audit also analysed the composition of the waste stream generated by households and found that 17% (18L) was recyclable materials and 34% (36L) garden organics.
 8. Anecdotal evidence indicates that the majority of recycling bins are utilised to capacity and the materials in the general bin may overflow.
 9. The current total annual bin capacity provided to residents is 18.72kL, made up of 12.48kL general waste and 6.24kL recycling capacity.
 10. All residential properties are subject to a waste service fee of \$400 per annum (2013/14). This fee covers all costs related to providing a waste service including:
 - Household collections
 - Skip bin service
 - Transfer station operation
 - Reserve and event waste services
 - Illegal dumping and litter in public places
 - Internal waste services and recycling/reuse programs
 11. Pensioners currently receive a 50% discount on the standard service fee. It is proposed that the proposed waste fees will provide a discount of greater than 50% dependant on the option chosen.
 12. In January 2014 the Minister of the Environment announced the availability of \$7.5m through the Waste Authority for funding under the Better Bins program.
 13. The funding is provided to encourage local governments to implement a three bin collection service for residents.
 14. In February 2014, the Waste Authority organised an information session to explain and promote the Better Bins Program, with presentations from the Waste Authority and local government staff covered the topics:
 - Statistics around waste in WA and comparisons with Eastern States.
 - The aims of the program.
 - How LG's have implemented three bin systems in WA.
 - How to make an application.
 15. Local governments who wish to participate in the Better Bins Program are required to submit an EoI to the Waste Authority. The EoI's will be assessed as they are received and funding provided on a first-in basis.

DETAILS

16. The Shire's Waste Strategy 2013-2022 includes the provision of a third household bin as a key element in the waste service (Strategy 1 – Improve Collections).

-
17. Evidence from local governments in WA and the Eastern states, as well as international experience, has demonstrated significant environmental gains through the provision of a three-bin system. This includes Cambridge, Busselton and Bunbury Councils. These gains flow on to financial benefits through a reduction in volumes to landfill and a corresponding reduction in the cost of the waste levy as part of the waste service.
18. The Waste Authority position paper on source separation (January 2014) provides the following advise:
- "South Australia, New South Wales and Victoria have commonly used a three-bin system for source separation of household waste and kerbside recycling for some time. Their recycling rates are typically between 50 and 60 per cent, which is significantly higher than the kerbside recycling being achieved by most West Australian Councils."*
19. The evidence has highlighted separation of waste at source by the user as one of the main drivers of these improvements. This includes the separation of recycling and organics from the general waste stream.
20. The Eastern Metropolitan Regional Council (EMRC) are in the process of determining whether to implement a waste to energy plant as part of the long term vision for the region. Dependent on the system, either a two or three bin system may be required. If a two bin system is required by the EMRC process, the intent is to maintain a three bin system for the Shire, which would allow the continuation of the mulch/compost process. Any excess green waste would be combined with the other waste stream by the EMRC for treatment in their plant.
21. In relation to the organics stream, this can either include both putrescible waste and garden organics, or be exclusively garden organics. The choice is dependent on the objectives of the local government and the ultimate treatment options that are available.
22. The funding guide provided by the Waste Authority identifies the following mandatory criteria:
- Demonstrated commitment to implement the Better Bins guidelines for a period of not less than two years.
 - Demonstrated commitment to ongoing implementation of the Better Bins guidelines beyond the life of the program.
 - Be a new initiative or value-add to an existing better practice activity.
 - Clearly defined project objectives, deliverables, milestones and outcomes.
 - Demonstrated commitment to delivering the project on-time and within budget.
 - Clearly identified destination of source separated materials.
 - A detailed and clear budget (proposals that include a contribution from local government will be considered favourably).
-

23. The funding guide provided by the Waste Authority identifies the following desirable criteria:
- Adoption of a three-bin system as identified in the Better Bins guidelines.
 - Full scale roll-out within the local government as opposed to allowing residents to choose to participate or service to only part of the local government.
 - Commitment to take back and use compost or mulch produced from green waste collected in the local government area.

24. The funding can include:
- Purchase of bins
 - Service/collection costs
 - Complementary measures such as increased community education and engagement

25. On the basis of the waste audit it is proposed that the standard bin option is changed to reflect the composition of the waste stream and to encourage better source separation by providing a smaller general waste bin. The following is the proposed standard service:

Item	Current	Proposed
General Waste Bin	240L (12.5kL pa)	120L (6.2kL pa)
Recycling	240L (6.2kL pa)	360L (9.4kL pa)
Green Organic	Nil	360L (9.4kL pa)
Total Capacity (annual)	18.7kL	25.0kL (+33%)
Cost of Service	\$400	\$425 (+6%)

The increase in cost is proposed to cover the increase in expenditure that is anticipated, including:

- Increased waste levy
 - Improvements to the transfer station
 - Amortisation of bin costs (10%)
26. For pensioners who select the smaller bins, the service is proposed as follows:

Item	Current	Proposed
General Waste Bin	240L (12.5kL pa)	80L (4.2kL pa)
Recycling	240L (6.2kL pa)	80L (2.1kL pa)
Green Organic	Nil	240L (6.2kL pa)
Total Capacity (annual)	18.7kL	12.5kL
Cost of Service	\$200	\$170 (-15%)

27. For pensioners who maintain the standard service, the service is proposed as follows:

Item	Current	Proposed
General Waste Bin	240L (12.5kL pa)	120L (6.2kL pa)
Recycling	240L (6.2kL pa)	360L (9.4kL pa)
Green Organic	Nil	360L (9.4kL pa)
Total Capacity (annual)	18.7kL	25.0kL
Cost of Service	\$200	\$200 (+0%)

28. For properties who decide to maintain a 240L general waste bin, the service is proposed as follows:

Item	Current	Proposed
General Waste Bin	240L (12.5kL pa)	240L (12.5kL pa)
Recycling	240L (6.2kL pa)	360L (9.4kL pa)
Green Organic	Nil	360L (9.4kL pa)
Total Capacity (annual)	18.7kL	31.3kL (+67%)
Cost of Service	\$400	\$530 (+33%)

The increase in cost is to recognise that a large portion of the increased capacity is due to the larger general waste volume, which attracts the highest disposal costs.

29. For multi-unit residential properties who maintain a private service, the service is proposed follows:

Item	Current	Proposed
General Waste Bin	Nil	Nil
Recycling	Nil	Nil
Green Organic	Nil	Nil
Total Capacity (annual)	Nil	Nil
Cost of Service	\$400	\$340

These properties will still have access to the skip bin service and unlimited entry to the transfer station, as well as contributing to the provision of services in parks, reserves, events and other waste services.

30. It is proposed that green waste collected will be converted to mulch and/or compost. This will include materials collected through the skip bin process, transfer station and generated by Shire activities. The proportion of materials treated in this way will be dependent on demand for the end products.
31. For the creation of mulch, several controls are required to ensure appropriate quality of materials as the feed stock. It is likely that significant volumes can be generated through the collection of materials generated by Shire activities.

-
32. For materials collected through the third bin and skip bin, it is likely that these would need to be appropriately composted as per Australian Standards, (*AS 4454-2012, Composts, Soil Conditioners and Mulches*), which is currently being implemented.

STATUTORY AND LEGAL CONSIDERATIONS

33. Waste Services are a general function of local government as defined in the *Local Government Act (1995)*.
34. The description of waste services, formation of the Waste Authority and determination of levies and fees is subject to the *Waste Avoidance and Resource Recovery Act (2007)* and the *Waste Avoidance and Resource Recovery Levy Act (2007)*.

POLICY CONSIDERATIONS

35. The Waste Strategy 2013-2023 approved by Council has been utilised in developing the various options based on the following:
1. Waste minimisation.
 2. Recovery and reuse.

COMMUNITY ENGAGEMENT REQUIREMENTS

36. The implementation of a third bin will require several months of education and information prior to the roll-out, followed by ongoing education and information to ratepayers, clubs and businesses.
37. It is proposed to develop two distinct materials from the current Waste Guide, being a revised Waste Calendar and Waste Guide.
38. The Waste Calendar will be mailed to all residents annually and will include the collection dates and area maps.
39. The Waste Guide will include details regarding the services and how to make the best use of these.
40. Discussions with the EMRC has identified that these will have to be developed independently of the normal process due to the significant change that this Shire is proposing as compared to the other five member Council's.
41. As part of the funding it is proposed to undertake a range of engagement processes such as:
- Providing an opportunity for the community to understand the reasons for the change, through a range of education processes:
 - Purchase a bin, showing what waste should go into which bin, rolled out to shopping centres and events.
 - Direct presentations to clubs, associations and action groups.
 - Full and half page adverts in local papers.

- Provide direct mail to specific demographics:
 - Pensioners to provide an explanation of options and costs.
 - Properties who have asked for an additional service.
 - Multi-residential properties.
- Specific advertising:
 - In the lead-up to the roll out of the green lid bin.
 - In the lead-up to the roll out of the yellow lid and red lid bin.
- Other activities:
 - Partner with local Earth Carers.
 - Website.
 - Social media.
 - Brochure with rates notice.
 - Message Boards on entry roads.

FINANCIAL CONSIDERATION

42. The cost of implementing a three-bin system is as follows:

Item	Cost - 2013/14	Cost - 2014/15	Cost - 2015/16	Cost - ongoing
Purchase of Bins	\$3,470,000	Nil	Nil	Nil
Rollout of bins	\$120,000	\$135,000	Nil	Nil
Collection Costs		\$545,000	\$567,000	\$590,000
Advertising & Promotion	\$5,000	\$12,000	\$12,000	\$32,000
Education Campaign	\$10,000	\$16,000	\$16,000	Included with advertising and promotion
Total	\$3,605,000	\$708,000	\$595,000	\$622,000

43. The EoI will include the following budget:

Item	Cost
Purchase & Rollout of Bins (2013/14)	\$3,725,000
Collection Costs (2014/15 – 2015-16)	\$1,112,000
Education, advertising and promotion (2013/14 – 2015-16)	\$71,000
Total Implementation Cost (2013/14 - 2015/16)	\$4,908,000
Total Better Bins Funding	\$4,334,000
Shire Contribution (2014/15 & 2015/16)	\$574,000

The Shire contribution in 2014/15 and 2015/16 is part of the normal Waste Services budget.

44. The waste service fees and charges for residential properties is modelled as follows:

Category	2013/14	2014/15	2015/16	2016/17
Residential General	\$400			
Residential 120L		\$425	\$450	\$475
Residential 240L		\$530	\$640	\$715
Residential Pensioner 80L	\$200	\$170	\$180	\$190
Residential Pensioner 120L	\$200	\$200	\$210	\$220
Residential Multi-Res		\$340	\$360	\$380

45. The cost of processing green waste to mulch and compost is estimated at \$46 - \$70 per tonne (Attachment 4). This is equivalent to the purchase of these materials. Further, in-house processing will save up to \$380,000 per annum in tipping costs at Red Hill.

STRATEGIC COMMUNITY PLAN

Strategic Planning Alignment

46. *Kalamunda Advancing: Strategic Community Plan to 2023*

OBJECTIVE 3.5 - To reduce the amount of waste produced and increase the amount of reuse and recycling of waste.

Strategy 3.5.1 Provide regular and reliable resource recovery collection services to the community.

Strategy 3.5.2 Identify initiatives and encourage residents to minimise waste generation and support resource recovery rather than traditional waste disposal.

SUSTAINABILITY

Social Implications

47. The provision of a three-bin system for the collection of household waste, is a major change to the way the community deal with their waste stream. There will need to be a sustained level of community engagement and communication regarding the changes and the ways the community can determine the best options for their needs.
48. There will be increased costs for those properties who decide to maintain the 240L general waste bin, reflective of the increased capacity of waste that is available.

Economic Implications

- 49. The waste service is an internally funded service with waste fees covering all the costs associated with the service.
- 50. Current expert analysis indicates a high probability of significant increases in the waste levy in future years. As the waste levy increases the size of any savings resulting from decreases in waste volume also increases.
- 51. If successful, the funding will cover the collection costs for 2014/15 and 2015/16. From 2016/17 the waste service fee will need to cover the additional costs associated with the collection of the third bin. (Approximately \$545,000 in 2013/14).

Environmental Implications

- 52. Currently, less than 30% of waste generated within the Shire is diverted from landfill. The state government targets are for 50% diversion in 2015 and 65% by 2020. All local governments with three bin systems have achieved over 70% diversion rates since the implementation of these systems.
- 53. The collection of green organics provides an increased opportunity for the reuse of these materials as mulch or compost. This will reduce the Shire's reliance on sourcing materials from outside the region.
- 54. If the green organics are treated within the Shire, there will be other environmental advantages through reduced cartage of materials, including reduced fuel use and freight cost, with corresponding reductions in greenhouse emissions.

RISK MANAGEMENT CONSIDERATIONS

55.

Risk	Likelihood	Consequence	Risk Rating	Action/ Strategy
An EoI is not submitted	Possible	High	Extreme	This funding opportunity is unlikely to be available in the future so
The EoI is not successful	Possible	High	Extreme	Ensure the EoI adequately covers all mandatory and desirable criteria, in addition commentary regarding the appropriateness of the Shire as a pilot area due to its varied demographics and geography.

The costs exceed funding	Unlikely	Medium	Moderate	Budget is based on 2013 figures that have been reviewed.
The rollout is delayed	Possible	Medium	High	The roll-out will be staged across areas and bins purchased on a rolling basis to ensure the roll-out occurs in a management fashion.
Public outcry	Possible	Medium	High	Ensure that education, advertising, and promotion occur asap and are appropriate for the various demographic groups.

OFFICER COMMENT

- 56. The cost of purchasing and rolling out new bin stock is high and a barrier to the implementation of a revised collection service.
- 57. The provision of this funding is timely and may not be repeated. The funding will allow the implementation of the three bin system with a minimal impact on ratepayers.
- 58. This is an unprecedented opportunity to implement a range of improvements to the collection service designed to produce a change in behaviour that will achieve the long term objectives of waste minimisation and resource recovery or reuse.
- 59. The implementation of a third bin system in City of Cambridge and Shire of Busselton has shown substantial improvements in recycling rates.

Voting Requirements: Simple Majority

OFFICER RECOMMENDATION (C&C 11/2014)

That Council:

- 1. Confirm its commitment to its strategic objectives as outlined in the corporate plan and waste strategy to:
 - a) Waste minimisation
 - b) Resource recovery

-
2. Endorse the submission of an expression of interest to the Waste Authority to participate in the funding for the Better Bins Program.
 3. Note the change to the standard service to include a three bin service with a 120L general waste bin (red lid) collected weekly and two 360L recycling (yellow lid) and green organic (green lid) bins collected on alternating fortnights.
 4. Note that other bin options will be provided for the following groups:
 - Pensioners
 - Multi-unit residential
 - Large families
 5. Note the fee structure for 2014/15, 2015/16 and 2016/17 will be priced to reflect the additional cost in dealing with general waste. The fee structure will be implemented over a number of years to allow residents time to determine the appropriate bin combination to suit their needs.

Moved:

Seconded:

Vote:

Attachments 1

Better Bins Kerbside Collection Guidelines

[Click HERE to go directly to the document](#)

Attachment 2

Better Bins Funding Guide

[Click HERE to go directly to the document](#)

Attachment 3

Waste Strategy 2013-2022

[Click HERE to go directly to the document](#)

Attachment 4

FAQs Including Business Case for Third Bin for Green Waste

1. Will there be a reduction in waste to landfill?
2. What are the benefits in commencing a green waste mobile garbage bin (MGB) service when the EMRC are developing the resource recovery facility (RRF) at Red Hill?
3. What will happen with the third MGB when the RRF commences operations given the preference of the EMRC to develop a system where two bins are enough? What are the cost implications if we proceed with the Green Waste Bin in comparison with the current set-up?
4. Have we considered the 'Bulka Bag' which was recently trialled by Swan and Mundaring?
5. Further enquiries
 - a. how many tonnes of mulch have been used by the Shire on its parks and gardens for each of the last two years;
 - b. where the mulch has been sourced from and at what cost per tonne;
 - c. given that the strategy proposes to use 8,000 tonnes of mulch per year on the Shire's parks and gardens with 7,000 tonnes of this sourced from the green skip bins and 1,000 tonnes sourced from the proposed 3rd (green waste) bin, what will be the cost of
 - i. collecting the 3rd (green waste) bin;
 - ii. the cost of processing the contents of the 3rd bin into mulch and
 - iii. The cost per tonne of mulch produced from the 3rd bin?

Responses

1. Yes the comment is related to the waste service as a whole; however each component also has an impact. In regard to the green waste mobile garbage bin (MGB), the proposal is to convert this stream into a mulch and compost. This will be the case after the RRF is online. A simple chart has been provided to show this schematically.

There is an estimated 5,000T of green waste in the putrescible waste stream (19,000 total) by removing the green waste, the remaining 14,000T will still be delivered to Red Hill and when the RRF comes online it is this smaller volume that will be processed. Thus there will be an immediate saving of \$575,450 in tipping fees.

In addition to this, it must be noted that for residents who ask for an additional waste service, the reason given is

- The quantity of green waste (70-80%),
- Large family (20-25%),
- Other reasons (up to 5%).

Finally, the waste strategy has collated information from the Customer Satisfaction Survey 2011 (CSS) and this indicated the desire of the community to increase its recycling efforts as well as specific comments about collecting green waste. This is equivalent to the reasons for implementing the recycling service which has an equivalent collection cost.

In contrast to the recycling collection, the green waste collection gives the Shire an opportunity to utilise this resource internally, rather than export this material for processing and reuse by others.

-
2. The EMRC are developing a resource recovery facility at Hazelmere, with a green waste shredding and mulching facility. This will be online mid-2013. Even when the EMRC RRF is online, the diversion of green waste from the waste stream to either Hazelmere or our own treatment process would have the following savings

1. Divert an additional 5,000 tonnes of material from landfill (until the EMRC RRF is operational). After the RRF is online, this material provides a resource that can be used to improve amenity in the Shire and potentially provide a free resource to the community. Sending this material to the RRF would result in permanently losing this resource.
2. Reduce the cartage and tipping fees for this material (20km each way per load for 5000T = 625loads = 25,000km) and reduce labour and plant costs for same =
 - 375 man hours @ \$80/hr. = \$30,000
 - Plant costs @ \$3/km = \$75,000
 - Tipping costs @ \$38.86/T = \$194,300 (uncontaminated green waste)

When the RRF comes on line the Shire would retain the green waste MGB service and mulch/compost this resource for use internally. This is the preferred option and experience elsewhere has shown that this service is well received by ratepayers and has continued in all areas where it was implemented.

3. The attached cost spread sheet and explanatory notes provides a financial comparison of several options.
 - There are five options assessed
 - The current process
 - The proposed process processing green waste at Hazelmere
 - The proposed process processing green waste at Walliston
 - Only utilising green waste collected via skip at Hazelmere
 - Only utilising green waste collected via skip at Walliston
 - Assumptions
 - All fees charges and rates are 2013/14 and GST excluded.
 - All km calculations are bases on a 17.5km trip each way to Hazelmere and 7.5km to Walliston.
 - No account has been made for interest payments on loans.
 - Assumed a minimum contamination, of 5%.
 - The base amount of 7,500T mulch needs to be produced or purchased in all options.
 - The saving in tipping fees by reducing waste to EMRC from 19,000 to 14,000T is \$575,450.
 - Outcomes
 - Processing the green waste internally is better than utilising Hazelmere.
 - In comparison to the current process, there are considerable savings for all the four options as follows
 - Option 2 -6.5%
 - Option 3 -14.0%
 - Option 4 -28.4%
 - Option 5 -30.2%
-

-
- The savings shown for options 4 and 5 represent the difference in not paying to purchase the additional bin or provide the service, however no account has been made for the direct saving extracting this material from the putrescible waste stream.
 - Once the saving in tipping fee is applied, the activity cost for option 2 and 3 (with the green bin service) is lower than options 4 and 5.
 - The additional costs for the third bin are fully funded from the waste levy and will have no impact on municipal funds.
 - The additional cost for the third bin is a one-off cost and the increase in the levy from 2013/14 presents an opportunity to provide an increase in the waste reserve of around \$800,000 from 2014/15. This will allow further improvements in the service into the future.
 - A green waste collection will demonstrate to the community that the Shire is taking its responsibility for recycling seriously and further, in comparison to the current recycling service, there is the additional benefit of a resource that the Shire can utilise to capture further savings in other costs. This was a clear message from the 2011 CSS and specific mention regarding green waste services would mean that the community in general would be willing to pay the increased levy in return for these improved services. As stated before, the processing to mulch and compost is an additional benefit, not the main reason for the proposal.
4. The 'Bulka Bags' were trialled by both Swan and Mundaring. The initial commentary from both Shires indicated a slow take-up of the service, contaminated loads. Recent discussions have shown that these issues have remained and also flag potentially higher costs and logistic issues with the delivery and collection of these bags. Detailed comments are
- Mundaring
 - Delivery of bags was problematic and resource hungry
 - Higher collection and tipping costs (135/T for traditional increasing to 431/T for Bulka Bags)
 - Low take-up of service
 - Increased contamination
 - The type of collection resources (single truck with lifting device) is relatively inefficient compared to the traditional method which utilised bob-cats.
 - Swan
 - Slow take-up of service
 - Increased costs
 - Increased contamination
 - Other matters
 - The Bulka Bags can be reused, however no assessment has been made of how they would be cleaned and repackaged for reuse.
 - There is potential for these bags to be taken by others in the community resulting in higher costs to make an additional delivery.
-

Overall officers were not committed to recommending that the Bulka Bag service was to continue past the trial.

5. The responses are:

- a. In 2011/12 and 2012/13 the parks and gardens staff purchased approximately 300T per year. This is only for maintenance works around the major buildings and some parks.

Additional amounts may have been purchased for capital projects arranged and supervised by other departments.

Further, there is the intention to mulch median and roundabout beds (most are not currently), garden beds and several parks (hydro zoning). For example Welshpool Road median would require 1,950T (2km at 10m wide = 4,500cum). This would increase use of mulch to significantly over 7,000T per annum. Any additional mulch produced can be returned to the community as necessary.

Please note that previous concerns regarding contamination of mulch can be resolved through the implementation of the Australian Standard process for the processing of this material.

- b. The majority of mulch utilised for maintenance was purchased through WA and J King P/L. The cost varies from \$52.50-64.50/T (2012/13 prices) depending on quantities ordered.

c. As follows

- i. Green waste MGB collection cost would be around \$105.02/T (recycling collection cost is also \$105.02/T). Note that the green waste collection will provide the shire with a resource whilst the recycling service does not.
- ii. The cost of processing the contents of the 3rd bin into mulch - \$32.20/T internally processed or \$48.78/T for Hazelmere.
- iii. The cost per tonne of mulch produced from the 3rd bin depends on the option chosen this varies from \$152.62-172.72/T, however this includes the collection cost which is not appropriate to consider. This is because recycling collection costs the same amount, however the Shire does not get any benefit from that resource. Excluding the collection costs gives a range of costs of between \$46.00-69.68/T. Both options with the green bin are comparable to purchase costs, with in-house processing showing considerable savings of \$19/T (29%).

Also note that even without mulching, the diversion of 5,000T of material from the putrescible waste stream to the green waste stream would provide a minimum of \$383,650 per annum in direct savings in tipping fees. A payback period on just over two years.

			Option 1 - Current Service	Option 2 - Proposed Service + process @ Hazelmere (HZ)	Option 3 - proposed service + process in-house (Walliston - WS)	Option 4 Proposed Skip Bin without third Bin (HZ)	Option 5- proposed service without third bin + process (WS)	Comment
Collection	A	Base bulk verge/ skip bin contractor cost	\$ 3,252,758.00	\$ 1,940,400.00	\$ 1,940,400.00	\$ 1,940,400.00	\$ 1,940,400.00	
	B	Cost to collect green waste (@ 46.5%)	\$ 1,512,532.47	\$ 902,286.00	\$ 902,286.00	\$ 902,286.00	\$ 902,286.00	green waste tonnes / total tonnes = 4000/8600 = 46.5%
	C	Green waste MGB (Third Bin) contractor cost		\$ 525,096.00	\$ 525,096.00			
	D	Net Contractor Cost	\$ 1,512,532.47	\$ 1,427,382.00	\$ 1,427,382.00	\$ 902,286.00	\$ 902,286.00	includes cartage from collection to processing
	E	Third bin annual cost (full cost \$908,160)		\$ 90,816.00	\$ 90,816.00			assume bin life = 10 years
	F	tonnage of Green waste collected (1,450T internal; 4,000T in Bulk Verge; 5,000T in MGB)	\$ 5,450.00	\$ 10,450.00	\$ 10,450.00	\$ 5,450.00	\$ 5,450.00	
	G	tonnage of green waste available for processing (internal and Bulk verge ~20% lost - large logs, etc.; 5% loss from MGB)	-	9,092	9,092	4,742	4,742	
	H	amount of mulch available (@70% conversion)	-	6,364	6,364	3,319	3,319	
Processing	J	tonnage of green waste processed	-	9,092	9,092	4,742	4,742	
	K	Quantity to purchase/produce to ensure 7,500T mulch available	7,500	1,136	1,136	4,181	4,181	
	L	Cost to purchase mulch (@\$67/T) taking account collection	\$ 502,500.00	\$ 76,108.65	\$ 76,108.65	\$ 280,123.65	\$ 280,123.65	includes cartage (2012/13 rate = 64.50 + 5% increase to 2013/14 rate of \$67/T)
	M	cost to process @ Hazelmere (\$38.36/T)		\$ 348,749.94		\$ 181,883.94		
	N	Annual cost to own plant (\$800,000 setup cost)			\$ 44,444.44		\$ 44,444.44	assume plant life is 18 years
	O	Annual plant running cost excluding labour			\$ 52,276.13		\$ 27,263.63	processing 200 days per annum 45T/day
P	Annual labour costs			\$ 112,000.00		\$ 112,000.00	one full time staff member; one casual (0.4EFT)	
Supply	Q	Plant cost from processor/supplier to site per 8T load	\$ -	\$ 26.95	\$ 11.55	\$ 26.95	\$ 11.55	Hazelmere ~35km round trip; Walliston 15km round-trip
	R	Labour cost from processor/supplier to site per 8T load	\$ -	\$ 120.00	\$ 60.00	\$ 120.00	\$ 60.00	HZ = 1 hour; WS = 45min
	S	total cartage cost	\$ -	\$ 20,865.98	\$ 10,159.65	\$ 76,798.83	\$ 37,393.37	
	T	total cost to produce/purchase mulch	\$ 502,500.00	\$ 445,724.57	\$ 294,988.87	\$ 538,806.42	\$ 501,225.09	
Sub Total	U	Activity cost without reduction in EMRC tipping fee.	\$ 2,015,032.47	\$ 1,873,106.57	\$ 1,722,370.87	\$ 1,441,092.42	\$ 1,403,511.09	
	V	saving in tipping fees		-\$ 575,450.00	-\$ 575,450.00			
Total	W	Activity cost with saving in EMRC tipping fee.	\$ 2,015,032.47	\$ 1,297,656.57	\$ 1,146,920.87	\$ 1,441,092.42	\$ 1,403,511.09	
	X	Cost per tonne including collection	\$ 268.67	\$ 173.02	\$ 152.92	\$ 192.15	\$ 187.13	
	Y	Cost per tonne excluding collection	\$ 67.00	\$ 70.04	\$ 46.35	\$ 162.34	\$ 151.01	
	Z	Cost per tonne processing only		\$ 49.03	\$ 32.45	\$ 113.64	\$ 105.71	

Ref	Title	Comment	Formula
A	Base bulk verge/ skip bin contractor cost	Contracted price for service delivery in 2013/14	
B	Cost to collect green waste (@ 46%)	It is estimated from existing tonnages that 46% of bulk verge collection is green waste (2012 – 4000T Green 4,600 T hard). Thus the cost to collect green waste from the verge is this proportion of the total contractor cost in the row above.	=0.465*A
C	Green Waste MGB (third bin) contractor cost	Only for Options 2 and 3. Contracted price for service delivery in 2013/14	
D	Net Contractor Cost	Total cost to collect green waste from the verge and MGB	=B+C
E	Third bin annual cost (full cost \$908,160)	Only for Options 2 and 3. Generally bins have an average life of between 8 and 12 years. This is one tenth of the cost to supply the third bin and represents the expected annual replacement cost of these bins	=90,816
F	tonnage of Green waste collected (1,450T internal; 4,000T in Bulk Verge; 5,000T in MGB)	The total tonnage of green waste collected For Options 1,4 and 5 = 5450 For Options 2 and 3 = 10,450	
G	tonnage of green waste available for processing (internal and Bulk verge ~20% lost - large logs, etc.; 5% loss from MGB)	Only 20% of green waste is processed whilst over 95% of MGB waste is able to be processed. This accounts for contamination, losses and large logs. Based on the proportion of bulk and MGB collection, the weighted processing proportion is 87%	=0.87*F
H	amount of mulch available (@75% conversion)	During processing up to 30% of material weight is lost (moisture and material loss e.g. wind)	=0.70*G
J	tonnage of green waste processed	This is the same amount in row G	
K	Quantity to purchase/produce to ensure 7,500T mulch available	The base usage of mulch per annum for maintenance is currently around 7,500 T. This does not account for specific projects and increased service levels. This row represents the balance after the production of mulch (row J)	=7500-J
L	Cost to purchase mulch (@\$67/T) taking account collection	The cost to purchase the balance of mulch required to meet the base quantity. The 2012/13 rate is currently \$64.50 per tonne => 2013/14 rate \$67/T (5% escalation).	=67*K
M	cost to process @ Hazelmere (\$37/T)	Only for Options 2 and 4. The cost to process green waste at Hazelmere based on the 2013/14 rate of \$38.86/T. note the cost to take waste to Hazelmere is already included in the collection costs in rows B and C.	=38.36*J
N	Annual cost to own plant (\$800,000 setup cost)	Only for Options 3 and 5. The cost to develop a plant that can process up to 10,000 T of green waste is estimated at \$800,000 and the expected life of the plant is 20-25 years to be conservative, an effective life of 18 years is used and this amount represents the annual depreciation cost (ownership cost)	= \$800,000/18 = \$44,444.44

O	Annual plant running cost excluding labour	Only for Options 3 and 5. Based on the cost of consumables, utilities and other running costs it is estimated that a plant this size will cost \$5.75 per tonne of material processed.	=5.75*J
P	Annual labour costs	Only for Options 3 and 5. Based on 1.4 equivalent full time staff.	=1.4*80,000
Q	Plant cost from processor/supplier to site per 8T load	Only for Options 2, 3, 4 and 5 as cost of purchase mulch includes delivery. This represents the plant cost to transport materials from the processor to site, assuming Hazelmere is 35km and own plant is 15km round trip. The \$1.77/km for 8T truck	=1.77*distance
R	Labour cost from processor/supplier to site per 8T load	Only for Options 2, 3, 4 and 5 as cost of purchase mulch includes delivery. This represents the labour cost to transport materials from the processor to site, assuming 1.5 hours for a round trip to Hazelmere and 45 minutes to own plant. Hourly rate is \$80 (including overheads)	=80*time
S	total cartage cost	Only for Options 2, 3, 4 and 5. The number of loads is the quantity of mulch purchased/produces divided by the tonnes per load (8) and then multiplied by the cost per load (add rows Q and R)	=(k/8)*(Q+R)
T	total cost to produce/purchase mulch	The gross cost to produce or process mulch depending on the option.	=L+M+N+O+P+S
U	Activity cost without reduction in EMRC tipping fee.	Total cost to collect and produce/purchase mulch	=D+T
V	Saving in tipping fees	Saving by diverting 5,000T from putrescible waste (tipping fee for 2013/14 is \$115.09/T for putrescible waste)	= \$575,450
W	Activity cost with saving in EMRC tipping fee.		=U-V
X	Cost per tonne including collection	Activity cost (with saving) by total tonnes (7,500)	= W/7500
Y	Cost per tonne excluding collection	Cost to produce/purchase mulch by total tonnes (7,500)	= T/7500
Z	Cost per tonne processing only	Cost to process green waste tonnage (G)	=T/G

Current Waste Processes 2012/13

Residential and Commercial



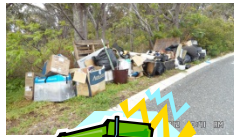
Internal



Putrescible
19,000 T
(Including 5,000 T
Green Waste)



Recycling
6,000 T



Bulk Verge - 4,000 T
green waste
4,600 T hard waste



General Waste
8,525 T

Recycling
250 T



Green Waste
1,450 T

Construction
Unknown tonnage,
mostly reused



Shire Contractor



Private Contractor



EMRC landfill (no RRF)



Recycling at various locations
Shire of Kalamunda



Green waste mulch, compost and reuse



Construction

Proposed Waste Processes 2013/14



Putrescible
14,000 T



Recycling
6,000 T



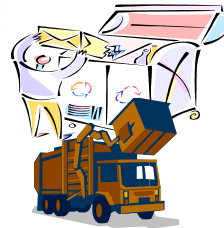
Skip
4,600 T
hard
waste



Skip
4,000 T
green
waste



Green Waste
5,000



?



General Waste
8,525 T



Recycling
250 T



Green Waste
1,450 T

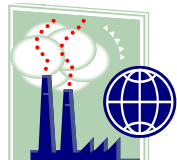


Construction
Unknown tonnage,
mostly reused

EMRC RRF in final stages of planning and approvals (expected to come online after 2014/15)



Shire Contractor



EMRC RRF



EMRC landfill



Recycling at various locations



Green waste mulch, compost and reuse



Construction

Private Contractor

Declaration of financial / conflict of interests to be recorded prior to dealing with each item.

12 Change in Valuation Method

Previous Items	N/A
Responsible Officer	Director Corporate Services
Service Area	Finance
File Reference	FI-RTS-006
Applicant	Various – refer to attachment
Owner	Various

[Attachment 1](#)

[Valuation Summary Sheet](#)

PURPOSE

1. For Council to support the change in the valuation methodology from Unimproved Valuation (UV) to Gross Rental Value (GRV) for the following lots:

Lot 1 (796) Canning Road Carmel
Lot 2 (487) Canning Road Carmel
Lot 6 (810) Canning Road Carmel
Lot 100 (700) Canning Road Carmel
Lot 10 (9) Hatch Court High Wycombe
Lot 14 (27) Hatch Court High Wycombe
Lot 51 (26) Hatch Court High Wycombe

BACKGROUND

2. A land survey was carried out in 2012 to determine the primary use of the above properties. Property owners were sent a questionnaire to complete and the above property owners have responded. These properties are predominantly residential where the land use has changed due to the financial constraints.
3. A search of all surrounding properties shows that the neighbouring properties valuations are based on the GRV method rather than UV method and the change being proposed to the valuation method from UV to GRV would provide equity for the above properties.

DETAILS

4. An application to the Minister of Local Government & Communities requires the support of Council prior to the Minister making a determination.
5. Section 6.28 of the *Local Government Act 1995*, provides:
 - (1) *The Minister is to —*
 - (a) *determine the method of valuation of land to be used by a local government as the basis for a rate; and*
 - (b) *publish a notice of the determination in the Government Gazette.*

- (2) *In determining the method of valuation of land to be used by a local government the Minister is to have regard to the general principle that the basis for a rate on any land is to be —*
 - (a) *where the land is used predominantly for rural purposes, the unimproved value of the land; and*
 - (b) *where the land is used predominantly for non-rural purposes, the gross rental value of the land.*
- (3) *The unimproved value or gross rental value, as the case requires, of rateable land in the district of a local government is to be recorded in the rate record of that local government.*

STATUTORY AND LEGAL CONSIDERATIONS

6. The *Local Government Act 1995 Section 6.28* requires Ministerial approval for a change in valuation methodology

POLICY CONSIDERATIONS

7. Nil.

COMMUNITY ENGAGEMENT REQUIREMENTS

8. Nil.

FINANCIAL CONSIDERATION

9. The Shire currently generated combines rates worth \$14,747 from the relevant properties under the current valuation method. If the proposal to change the valuation method were to be accepted by the Minister of Local Government and Communities, the revised rateable worth is estimated to be \$8,790. The loss in rates would need to be covered when the Shire prepares its rates modelling for the coming budget year of 2014/15.

STRATEGIC COMMUNITY PLAN

Strategic Planning Alignment

10. *Kalamunda Advancing: Strategic Community Plan to 2023*
OBJECTIVE 6.8 – To ensure financial sustainability through the implementation of effective financial management, systems and plans.
Strategy 6.8.4 provides effective financial services to support the Shire's Operations and to meet sustainability planning, reporting and accountable requirements.

SUSTAINABILITY

Social Implications

11. Nil.

Economic Implications

12. Nil.

Environmental Implications

13. Nil.

RISK MANAGEMENT CONSIDERATIONS

14.

Risk	Likelihood	Consequence	Rating	Action/Strategy
The Shire faces the financial exposure of reduced rates revenue in the future.	Possible	Minor	Medium	Ensure rates modelling is updated to take into account the changes in valuation methodology so that overall rate revenue target is maintained.

OFFICER COMMENT

15. The change in in the valuation methodology from UV to GRV is supported, particularly in light of evidence from surrounding properties which are of similar land use.

Voting Requirements: Simple Majority

OFFICER RECOMMENDATION (C&C 12/2014)

That Council:

1. Endorses the application for the Minister of Local Government and Communities to change method of valuation of the following properties:

Lot 1 (796) Canning Road Carmel
Lot 2 (487) Canning Road Carmel
Lot 6 (810) Canning Road Carmel
Lot 100 (700) Canning Road Carmel
Lot 10 (9) Hatch Court High Wycombe
Lot 14 (27) Hatch Court High Wycombe
Lot 51 (26) Hatch Court High Wycombe

Moved:

Seconded:

Vote:

[Attachment 1](#)

Valuation Summary Sheet

[Click HERE to go directly to the document](#)

10.0 MOTIONS OF WHICH PREVIOUS NOTICE HAS BEEN GIVEN

11.0 QUESTIONS BY MEMBERS WITHOUT NOTICE

12.0 QUESTIONS BY MEMBERS OF WHICH DUE NOTICE HAS BEEN GIVEN

Taken on Notice from Corporate & Community Services Committee Meeting 10 February 2014

The following were queried and further information requested.

- 12.1 Q. EFT 32888 Dick Smith, Electrical Supplies, \$2,037.84.
- A. For the purchase of mobile phones and computer storage accessory supplies.
- 12.2 Q. EFT 33471 Dick Smith, Electrical Supplies, \$854.90.
- A. For the purchase of a Smartphone for Ranger & Emergency Services and two digital cameras with cases, SD memory cards and batteries and one Terabyte storage drive for Infrastructure Services.
- 12.3 Q. EFT 33021 PLE Computers, Supply of a Camera Detector for PSCSNMPEE for IT Department.
- A. Amount relates to the purchase of a security camera for the server room. The computer would log all movement within server room as a security requirement and risk management perspective considering the significant value of equipment in this area.
- 12.4 Q. A Councillor queried a payment made from the Trust Account on 11 December 2013 to Ben-Pelech Investments Pty Ltd for the purchase of Lot 30 (No 310) Hale Road, Wattle Grove, \$414,837.50.
- A. Purchase of additional land for extension of Arthur Road – Cell 9.
- 12.5 Report 07 – Quarterly Progress Report, October to December 2013
- Q. A Councillor drew attention to the Key Performance Indicators (KPIs) for Planning Applications and noted this was sitting at 55%, when 95% was the acceptable level. The executive comment explained that the KPI is often not achievable if the application also requires West Australian Planning Committee (WAPC) determination. The Councillor requested that information be provided to indicate which applications the Shire has control over and which it does not.
- A. No development applications were held up by the WAPC. Two subdivisions took longer than 20 working days to be determined by the WAPC due to their statutory timeframes (42 day referral period and 60 day determination period).

Of the development/codes approval applications determined beyond 20 working days in this period, the following occurred:

- 77 were advertised.
- 6 required further information.
- 3 were determined by Council.

13.0 URGENT BUSINESS APPROVED BY THE PRESIDING MEMBER OR BY DECISION

14.0 MEETING CLOSED TO THE PUBLIC

15.0 CLOSURE